

West Boynton Area Elementary School

03-Z



Exhibit "Z"



Guaranteed Maximum Price

Phase 2 – Vertical Construction (5/29/07)

Project # 0281-8843

for

The School District of Palm Beach County

Prepared by



Zyscovich, Inc.

W.G. MILLS, INC.
CONSTRUCTION MANAGERS
GENERAL CONTRACTORS



W.G. MILLS, INC.
CONSTRUCTION MANAGERS
GENERAL CONTRACTORS

Sarasota

Ft. Myers

Clearwater

Jacksonville

Palm Beach

CGC010194

May 29, 2007

The School District of Palm Beach County
3320 Forest Hill Boulevard, Suite C-331
West Palm Beach, FL 33406

Attn: Mr. Angel Garcia, Senior Projects Administrator

RE: West Boynton Area Elementary School 03-Z
Project # 0281-8843
Guaranteed Maximum Price (GMP) Proposal
Phase 2 - Vertical Construction

Dear Mr. Garcia:

W. G. Mills, Inc. is pleased to submit our Guaranteed Maximum Price proposal for the construction of the West Boynton Area Elementary School (03-Z) Phase 2-Vertical Construction revised per your comments. We have thoroughly enjoyed working with you, the School District staff and Zyscovich, inc. (architects) through the preconstruction process and are genuinely excited about continuing our commitment to excellence in the construction phase of this project.

We have included herewith, the Phase 2-Vertical Construction GMP package for your review including a list of qualifications and clarifications, a construction schedule, value engineering suggestions and a list of the documents that are the basis of this GMP. The alternate V.E. spreadsheet and GMP Value have been revised to reflect those items accepted. The "Qualifications and Clarifications" have been revised per your comments. The required exhibits have also been attached.

We know how important it is for you to have the confidence that this GMP is thorough, cost effective and complete. You can be confident we have the best team, a thorough knowledge of the project and the assurance that we will turn over to you a quality project within your schedule.

We look forward to meeting with you and presenting this GMP in further detail.

Sincerely,
W. G. Mills, Inc.

Jason Wilson
Project Manager

Table of Contents

- 1. Executive Summary**
- 2. Organizational Chart**
- 3. Document List**
- 4. Subcontractor Solicitation / Bidders Log**
- 5. Guaranteed Maximum Price
(Summary & Detail)**
- 6. Qualifications & Clarifications**
- 7. Alternates/Value Engineering**
- 8. Proposed Project Schedule**
- 9. Extraordinary Costs Summary**
- 10. Miscellaneous Exhibits**



May 18th, 2007

West Boynton Area Elementary School (03-Z)
Project No. 0281-8243
WGM # 20646



PROJECT DATA

Construction Budget:	N/A
Scheduled Start:	May 1st, 2007
Scheduled Finish:	July 18, 2008
Architect:	Zyscovich, Inc.
Project Delivery:	CM @ Risk
New Construction:	126,651sf
Student Capacity:	
Current:	NA
New:	960

West Boynton Area Elementary School (03-Z)

The School District of Palm Beach County



W.G. MILLS INC. PROJECT TEAM

Tim Hensey	Project Executive
Marty Strype	Director of Preconstruction
Dean Crowley	Co-Project Director
Lyndell Mims	Co-Project Director
Jason Wilson	Project Manager
David Cutlip	Asst. Project Manager
Andre Collins	Project Engineer
Marion Smith	Superintendent

EXECUTIVE SUMMARY

The project located at SW corner of Boynton Beach Blvd. and Acme Dairy Rd. in Palm Beach County, Florida, consists of constructing a new, two-story elementary school, on an unoccupied parcel of land.

This Guaranteed Maximum Price (GMP) provides details and information for the West Boynton Area Elementary School (03-Z) project. It includes project and team information, a document list from which this GMP is based upon, an organizational chart, qualifications and clarifications, a preliminary schedule, and a list of extraordinary costs.

The current preliminary schedule includes a construction start date of May 1st, 2007, and completion date of July 18th, 2007. General conditions has only been included for a period of 15 months, with the expectation that we will be released to build this project no later then May 1st.

A participation rate of Women and Minority Business Enterprises (W/MBE) of 15% is required by the School District of Palm Beach County. This project is dedicating over 21% of subcontracted work to W/MBE's certified by the School District of Palm Beach County.

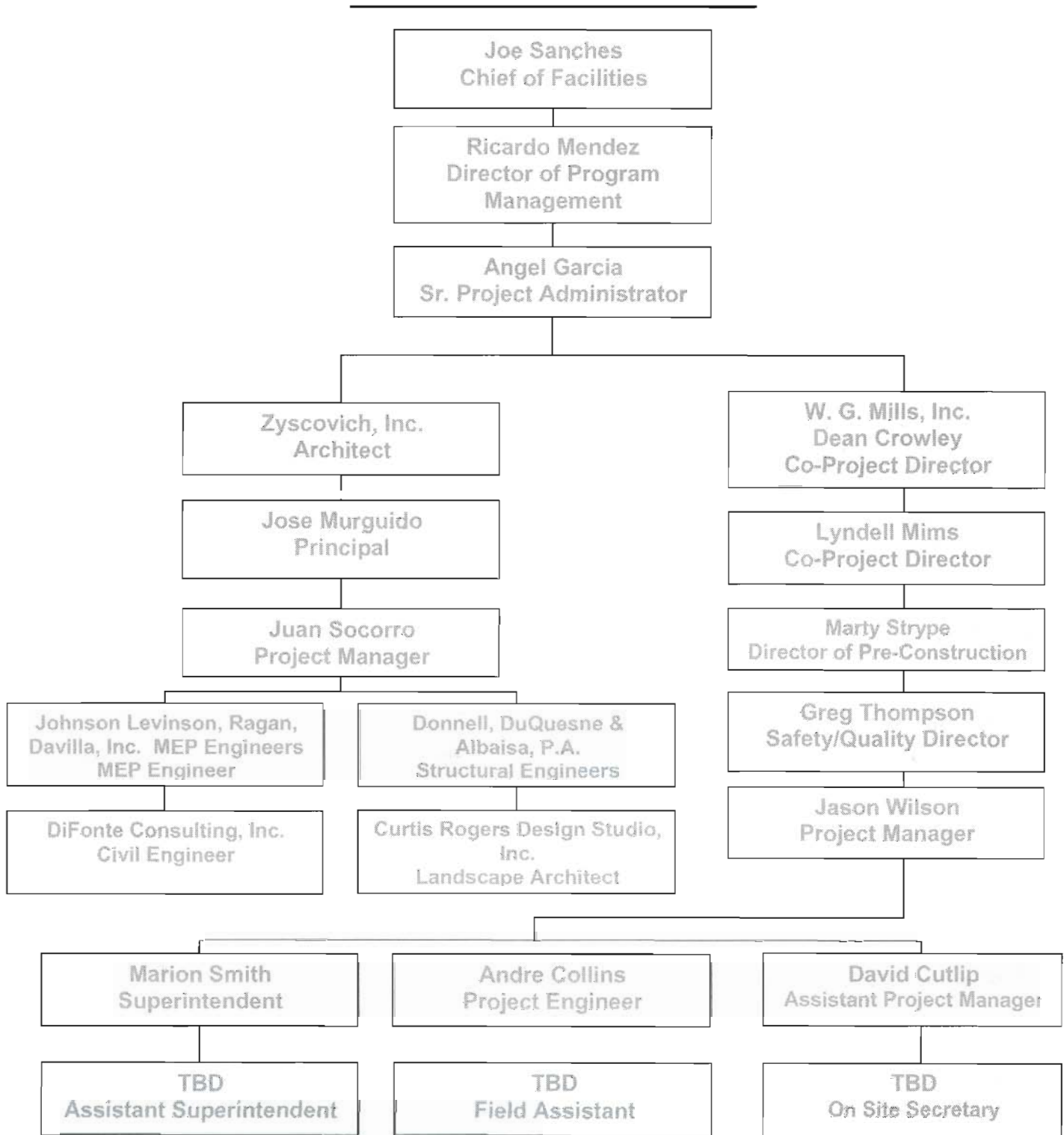
The Guaranteed Maximum Price, including site preparation, vertical construction, general conditions, contingency, bonds, insurance, and overhead & profit, is \$24,318,420.00. The total includes an additional amount of \$448,710.00 for construction contingency. The Guaranteed Maximum Price Total also includes a projected tax savings of \$280,844.00. This value is inclusive of the work previously included in the Phase 1 - Site GMP. After subtracting the value previously approved for the Phase 1 Site GMP (\$1,173,957.00), the Phase 2 - Vertical GMP is \$23,144,463.00.

W.G. Mills, Inc.
8895 North Military Trail, Suite 102 E
Palm Beach Gardens, Florida 33410
(561) 691-0060 Phone
(561) 691-0055 Fax
www.wgmills.com
jwilson@wgmills.com



Organizational Chart

School District of Palm Beach County
Owner



West Boynton Area Elementary School (03-Z)
Project #0281-8343



Work Hard // Build Right®

Current Drawing List

Summary Log, Grouped by Discipline

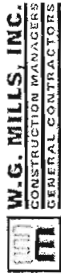
West Boynton Area Elementary School 03-Z
 West Boynton Beach Blvd & Acme Dairy Road
 Boynton Beach, FL 33437

Project # 20646

Tel: 561-690-1-0060 Fax: 561-691-0050

W. G. Mills, Inc.

Number	Rev	Title	Rev Date	Bulletin	% Complete	Status	Category	General Notes	Ref RFIs
Architectural									
A-101	0	Enlarged Parent Drop Off/Parking Area Plan	12/15/2006		100	GMP Set			
A-102	0	Enlarged Main Entrance Plan	12/15/2006		100	GMP Set			
A-103	0	Enlarged buss Drop Off/Staff Parking Area Plan	12/15/2006		100	GMP Set			
A-104	0	Enlarged Kindergarten Play Area/Rear Plaza/Service Yard Plan	12/15/2006		100	GMP Set			
A-105	0	Playcourts & Pvmnt Marking Plans	12/15/2006		100	GMP Set			
A-106	1	Enlarged Court Plans & Details	2/12/2007		100	GMP Set		Building department comments	
A-107	0	Soccer & Softball Plans & Details	12/15/2006		100	GMP Set			
A-108	0	P.E. Shelter Details	12/15/2006		100	GMP Set			
A-109	0	Miscellaneous Site Details	12/15/2006		100	GMP Set			
A-110	0	Fence & Gate Details	12/15/2006		100	GMP Set			
A-111	0	Covered Walkway Details	12/15/2006		100	GMP Set			
A-201	0	Overall 1st Floor Plan Bldg. 1	12/15/2006		100	GMP Set			
A-202	0	Overall 2nd Floor Plan Bldg. 1	12/15/2006		100	GMP Set			
A-211	0	Enlarged 1st Floor Plan Sec. A	12/15/2006		100	GMP Set			
A-212	0	Enlarged 1st Floor Plan Sec. B	12/15/2006		100	GMP Set			
A-213	0	Enlarged 1st Floor Plan Sec. C	12/15/2006		100	GMP Set			
A-214	0	Enlarged 1st Floor Plan Sec. D	12/15/2006		100	GMP Set			
A-215	0	Enlarged 2nd Floor Plan Sec. A	12/15/2006		100	GMP Set			
A-216	0	Enlarged 2nd Floor Plan Sec. B	12/15/2006		100	GMP Set			



Work Hard // Build Right™

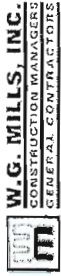
Current Drawing List
Summary Log, Grouped by Discipline

Number	Rev	Title	Rev Date	Bulletin	% Complete	Status	Category	General Notes	Ref RFI's
A-217	0	Enlarged 2nd Floor Plan Sec C	12/15/2006		100	GMP Set			
A-220	0	Miscellaneous Concrete Panel Details	12/15/2006		100	GMP Set			
A-221	0	Miscellaneous Concrete Panel Details	12/15/2006		100	GMP Set			
A-222	0	Miscellaneous Floor Plan and Column Details	12/15/2006		100	GMP Set			
A-223	1	Enlarged Stage Ramp & Stair Plan and Sections	2/12/2007		100	GMP Set		Building Department Comments	
A-311	0	1st Floor Refl. Ceiling Plan Sec. A	12/15/2006		100	GMP Set			
A-312	0	1st Floor Refl. Ceiling Plan Sec. B	12/15/2006		100	GMP Set			
A-313	0	1st Floor Refl. Ceiling Plan Sec. C	12/15/2006		100	GMP Set			
A-314	0	1st Floor Refl. Ceiling Plan Sec. D	12/15/2006		100	GMP Set			
A-315	0	2nd Floor Refl. Ceiling Plan Sec. A	12/15/2006		100	GMP Set			
A-316	0	2nd Floor Refl. Ceiling Plan Sec. B	12/15/2006		100	GMP Set			
A-317	0	2nd Floor Refl. Ceiling Plan Sec. C	12/15/2006		100	GMP Set			
A-320	0	Miscellaneous Soffit Details	12/15/2006		100	Construction		Sheet No Longer Included	
A-321	0	Miscellaneous Soffit Details	12/15/2006		100	Construction		Sheet No Longer Included	
A-401	0	Roof Plan	12/15/2006		100	GMP Set			
A-420	0	Roof Details and Roof Drainage Calculations	12/15/2006		100	GMP Set			
A-421	0	Roof Details	12/15/2006		100	GMP Set			
A-422	0	Roof Details	12/15/2006		100	GMP Set			
A-501	0	Building Elevations	12/15/2006		100	GMP Set			
A-502	0	Building Elevations	12/15/2006		100	GMP Set			
A-503	0	Building Elevations	12/15/2006		100	GMP Set			
A-504	0	Partial Exterior Elevations - Building "1"	12/15/2006		100	GMP Set			
A-520	0	Panel Recess and Scoreline Details	12/15/2006		100	GMP Set			



Current Drawing List
Summary Log, Grouped by Discipline

Number	Rev	Title	Rev Date	Bulletin	% Complete	Status	Category	General Notes	Ref RFls
A-601	0	Building Sections	12/15/2006		100	GMP Set			
A-602	0	Building Sections	12/15/2006		100	GMP Set			
A-603	0	Building Sections	12/15/2006		100	GMP Set			
A-604	0	Wall Sections	12/15/2006		100	GMP Set			
A-605	0	Wall Sections	12/15/2006		100	GMP Set			
A-606	0	Wall Sections - Building "1"	12/15/2006		100	GMP Set			
A-607	0	Wall Sections - Building "1"	12/15/2006		100	GMP Set			
A-650	0	Wall and Partition Types	12/15/2006		100	GMP Set			
A-674	0	Enlarged Stair 1 Plans & Sections	12/15/2006		100	GMP Set			
A-675	0	Enlarged Stair 2 Plans & Sections	12/15/2006		100	GMP Set			
A-676	0	Enlarged Stair 3 Plans & Sections	12/15/2006		100	GMP Set			
A-677	0	Stair and Handrail Details	12/15/2006		100	GMP Set			
A-680	0	Elevator Plan, Section & Details	12/15/2006		100	GMP Set			
A-690	0	Fire Stopping Penetration Chart	12/15/2006		100	GMP Set			
A-691	0	Fire Stopping Details	12/15/2006		100	GMP Set			
A-692	0	Fire Stopping Details	12/15/2006		100	GMP Set			
A-700	0	Mounting Heights & Elevations	12/15/2006		100	GMP Set			
A-701	1	1st Floor Furniture Plan Bldg. 1	2/12/2007		100	GMP Set		Building Department Comments	
A-702	1	Interior Elevations - Administration	2/12/2007		100	GMP Set		Building Department Comments	
A-703	1	1st & 2nd Floor Furniture Plan Bldgs. 1 & 2	2/12/2007		100	GMP Set		Building Department Comments	
A-705	1	1st Floor Furniture Plan Bldg. 1	2/12/2007		100	GMP Set		Building Department Comments	
A-706	1	1st & 2nd Floor Furniture Plan Bldg. 1	2/12/2007		100	GMP Set		Building Department Comments	
A-707	1	1st Floor Furniture Plan Bldg. 1	2/12/2007		100	GMP Set		Building Department Comments	
A-708	0	Interior Elevations - Media Center	12/15/2006		100	GMP Set			
A-709	0	Furniture Plan Bldg. 3 Multipurpose	12/15/2006		100	GMP Set			
A-710	1	Furniture Plan Bldg. 1 Kitchen Area	2/12/2007		100	GMP Set		Building Department Comments	



Current Drawing List
Summary Log, Grouped by Discipline

Number	Rev	Title	Rev Date	Bulletin	% Complete	Status	Category	General Notes	Ref RFI's
A-711	0	Interior Elevations - Multi Purpose/Dining	12/15/2006		100	GMP Set			
A-712	1	Furniture Plan Bldg. 3 Music Suite	2/12/2007		100	GMP Set		Building Department Comments	
A-713	1	Interior Elevations - Music Suite	2/12/2007		100	GMP Set		Building Department Comments	
A-714	1	1st & 2nd Floor Furniture Plan Bldgs. 1 & 4	2/12/2007		100	GMP Set		Building Department Comments	
A-715	1	Enlarged Furniture Plan/PT Classroom, ESE Resource Room, Storage	2/12/2007		100	GMP Set		Building Department Comments	
A-720	0	Overall First Floor Furniture Plan	12/15/2006		100	GMP Set			
A-721	0	Overall Second Floor Furniture Plan	12/15/2006		100	GMP Set			
A-740	0	Typ. Cabinet & Millwork Elevations	12/15/2006		100	GMP Set			
A-741	0	Custom Cabinet & Elevations	12/15/2006		100	GMP Set			
A-750	1	Enlarged 1st Floor Toilet Plans	2/12/2007		100	GMP Set		Building Department Comments	
A-751	0	Enlarged 2nd Floor Toilet Plans	12/15/2006		100	GMP Set			
A-800	0	Door Window & Louver Types	12/15/2006		100	GMP Set			
A-801	0	Door Schedule Bldg. 1 Ground Floor	12/15/2006		100	GMP Set			
A-802	0	Door Schedule Bldg. 1 Ground Floor	12/15/2006		100	GMP Set			
A-803	0	Door Schedule Bldg. 1 Ground Floor	12/15/2006		100	GMP Set			
A-804	0	Door Schedule Bldg. 1 2nd Floor	12/15/2006		100	GMP Set			
A-805	0	Door Schedule Bldg. 1 2nd Fl. & Bldg. 2	12/15/2006		100	GMP Set			
A-810	0	Door Jamb and Head Details	12/15/2006		100	GMP Set			
A-811	0	Door Threshold Details	12/15/2006		100	GMP Set			
A-850	0	Window Details	12/15/2006		100	GMP Set			
A-851	0	Window Details	12/15/2006		100	GMP Set			
A-900	0	Signage Details	12/15/2006		100	GMP Set			
A-901	0	Overall First Floor Signage Plan	12/15/2006		100	GMP Set			
A-902	0	Overall Second Floor Signage	12/15/2006		100	GMP Set			

Praglog Manager

Printed on: 5/18/2007 WGMIDATABASE - ACTIVE



Current Drawing List
Summary Log, Grouped by Discipline

Number	Rev	Title	Rev Date	Bulletin	% Complete	Status	Category	General Notes	Ref RFIs
FS-1	0	Food Service Equip. Layout Plan	12/15/2006		100	GMP Set			
FS-2	0	Food Service Electrical Plan	12/15/2006		100	GMP Set			
FS-3	0	Food Service Plbg. Plan	12/15/2006		100	GMP Set			
FS-4	0	Food Service Mech. Spcl.Cond. Plan	12/15/2006		100	GMP Set			
LS-100	0	Overall Site Plan Life Safety	12/15/2006		100	GMP Set			
LS-201	1	1st Floor Life Safety Plan	2/12/2007		100	GMP Set		SDPBC Building Department Comments	
LS-202	1	2nd Floor Life Safety Plan	2/12/2007		100	GMP Set		SDPBC Building Department Comments	
LS-211	0	1st Floor Life Safety Plan Sec. A	12/15/2006		100	GMP Set			
LS-212	1	1st Floor Life Safety Plan Sec. B	12/15/2006		100	GMP Set			
LS-213	0	1st Floor Life Safety Plan Sec. C	12/15/2006		100	GMP Set			
LS-214	0	1st Floor Life Safety Plan Sec. D	12/15/2006		100	GMP Set			
LS-215	0	2nd Floor Life Safety Plan Sec. A	12/15/2006		100	GMP Set			
LS-216	0	2nd Floor Life Safety Plan Sec. B	12/15/2006		100	GMP Set			
LS-217	0	2nd Floor Life Safety Plan Sec. C	12/15/2006		100	GMP Set			
S-204	0	1st Floor Plan Sec. D	12/15/2006		100	GMP Set			
Civil									
C-1	0	Title Sheet	12/15/2006		100	GMP Set			
C-10	0	Paving, Grading, Drainage Details & Notes	12/15/2006		100	GMP Set			
C-11	0	Paving, Grading, Drainage Details & Notes	12/15/2006		100	GMP Set			
C-12	1	Paving, Grading & Drainage Details & Notes	2/9/2007		100	GMP Set		Rev. 1 Tech. Comments	
C-13	1	Signing & Pavement Marking	2/9/2007		100	GMP Set		Rev. 1 Tech. Comments	



Current Drawing List
Summary Log, Grouped by Discipline

Number	Rev	Title	Rev Date	Bulletin	% Complete	Status	Category	General Notes	Ref RFIs
Details & Notes									
C-14	1	Offsite roadway Details and Notes	1/31/2007		100	GMP Set		SDPBC VE Comments	
C-15	0	Water & Sanitary Sewer Plan - For Reference Only	12/15/2007		100	GMP Set			
C-16	2	Water & Sanitary Sewer Plans	2/9/2007		100	GMP Set		Rev. 1 Tech. Comments	
C-17	0	Water & Sanitary Sewer Plans	12/15/2007		100	GMP Set			
C-18	0	Water & Sanitary Sewer Plans	12/15/2007		100	GMP Set			
C-19	0	Potable Water #1 Standard Details	12/15/2006		100	GMP Set		Standard Details	
C-2	1	Geometric Site Plans and Building Locations	2/9/2007		100	GMP Set		Rev. 1 Tech. Comments	
C-20	0	Potable Water and Wastewater Details and Notes	12/15/2006		100	GMP Set		Standard Details	
C-21	0	Potable Water and Wastewater Details and Notes	12/15/2006		100	GMP Set		Standard Details	
C-22	0	Potable Water and Wastewater Details and Notes	12/15/2006		100	GMP Set			
C-23	0	Sanitary Sewer Gravity Main Profiles	12/15/2006		100	GMP Set			
C-23A	0	Sanitary Sewer Gravity Main Profiles	12/15/2007		100	GMP Set			
C-3	0	Geometric Site Plans and Building Locations	12/15/2006		100	GMP Set			
C-4	1	Paving, Grading & Drainage and Signing & Marking Plans	1/22/2007		100	GMP Set			
C-5	2	Paving, Grading & Drainage and Signing & Marking Plans	2/9/2007		100	GMP Set		Rev. 1 Tech. Comments	
C-6	0	Paving, Grading & Drainage Plans Phases 1 & 2	12/15/2006		100	GMP Set			
C-7	0	Paving, Grading & Drainage and Signing & Marking Plans	12/15/2006		100	GMP Set			
C-8	1	Paving, Grading & Drainage and Signing & Marking Plans	2/9/2007		100	GMP Set		Rev. 1 Tech. Comments	
C-9	1	Boynton Beach Blvd. Improvements	1/31/2007		100	GMP Set		SDPBC VE Comments	
Civil Cover	0	Civil Cover	12/15/2006		100	GMP Set			
SU-100	0	Survey	12/15/2006		100	GMP Set			



Current Drawing List
Summary Log, Grouped by Discipline

Number	Rev	Title	Rev Date	Bulletin	% Complete	Status	Category	General Notes	Ref RFls
SU-101	0	Survey	12/15/2006		100	GMP Set			
SU-102	0	Survey	12/15/2006		100	GMP Set			
SU-103	0	Survey	10/5/2006		0				
CSI Division									
00001	0	Table of Contents	12/15/2006		100	GMP Set			
00003	0	Professional Signatures & Seals	12/15/2006		100	GMP Set			
00007	0	List of Professionals	12/15/2006		100	GMP Set			
00015	0	List of Drawings	12/15/2006		100	GMP Set			
00050	0	Geotechnical Report	12/15/2006		100	GMP Set			
00460	0	Trench Act Compliance Certificate	12/15/2006		100	GMP Set			
01010	0	Summary of Work	12/15/2006		100	GMP Set			
01027	0	Applications for Payment	12/15/2006		100	GMP Set			
01028	0	Modification Requirements	12/15/2006		100	GMP Set			
01039	0	Coordination and Meetings	12/15/2006		100	GMP Set			
01045	0	Cutting and Patching	12/15/2006		100	GMP Set			
01060	0	Regulatory Requirements	12/15/2006		100	GMP Set			
01120	0	Alteration Project Procedures	12/15/2006		100	GMP Set			
01300	0	Submittals	12/15/2006		100	GMP Set			
01311	0	Network Analysis Schedules	12/15/2006		100	GMP Set			
01400	0	Quality Control	12/15/2006		100	GMP Set			
01410	0	Testing Laboratory Services	12/15/2006		100	GMP Set			
01500	0	Construction Facilities and Temporary Controls	12/15/2006		100	GMP Set			
01540	0	Security	12/15/2006		100	GMP Set			
01560	0	Temporary Controls	12/15/2006		100	GMP Set			
01600	0	Material Equipment and Improved Equals	12/15/2006		100	GMP Set			
01650	0	Starter Systems	12/15/2006		100	GMP Set			
01700	0	Contract Closeout	12/15/2006		100	GMP Set			
01730	0	Operation and Maintenance	12/15/2006		100	GMP Set			



Current Drawing List
Summary Log, Grouped by Discipline

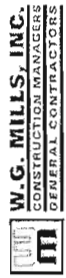
Number	Rev	Title	Rev Date	Bulletin	% Complete	Status	Category	General Notes	Ref RFIs
Data									
01740	0	Warranties	12/15/2006		100	GMP Set			
02060	0	Building Demolition	12/15/2006		100	GMP Set			
02070	0	Selective Demolition	12/15/2006		100	GMP Set			
02110	0	Site Clearing	12/15/2006		100	GMP Set			
02200	0	Earthwork	12/15/2006		100	GMP Set			
02280	0	Soil Treatment for Termite Control	12/15/2006		100	GMP Set			
02400	0	Bituminous Concrete Paving	12/15/2006		100	GMP Set			
02520	0	Concrete Curbs & Walks	12/15/2006		100	GMP Set			
02580	0	Pavement Marking	12/15/2006		100	GMP Set			
02660	0	Water Distribution System	12/15/2006		100	GMP Set			
02670	0	Irrigation Well System	12/15/2006		100	GMP Set			
02700	0	Site Storm Drainage System	12/15/2006		100	GMP Set			
02730	0	Sanitary Sewerage Collection System	12/15/2006		100	GMP Set			
02733	0	Lift Station and Sanitary Force Main	10/5/2006		50	Design/Development		Specification No Longer Included	
02800	0	Site Improvement and Amenities	10/5/2006		50	Design/Development		Specification No Longer Included	
02810	0	Underground Irrigation System	12/15/2006		100	GMP Set			
02831	0	Chain Link Fencing	12/15/2006		100	GMP Set			
02853	0	Wheel Stops	12/15/2006		100	GMP Set			
02870	1	Site Furnishings	12/15/2006		100	GMP Set			
02910	0	Tree Relocation	10/5/2006		50	Design/Development		Specification No Longer Included	
02931	0	Tree & Plant Protection	12/15/2006		100	GMP Set			
02938	0	Grass Sodding	12/15/2006		100	GMP Set			
02950	0	Trees, Plants, & Ground Cover	12/15/2006		100	GMP Set			
03200	0	Concrete Reinforcement	12/15/2006		100	GMP Set			
03300	0	Cast-in-Place Concrete	12/15/2006		100	GMP Set			
03341	0	Fibrous Concrete Reinforcing	12/15/2006		100	GMP Set			
03346	0	Concrete Floor Finishing	12/15/2006		100	GMP Set			
03411	0	Structural Precast Concrete	12/15/2006		100	GMP Set			



W.G. Mills, Inc. Building Right

Current Drawing List
Summary Log, Grouped by Discipline

Number	Rev	Title	Rev Date	Bulletin	% Complete	Status	Category	General Notes	Ref RFIs
03470	0	Tilt-Up Precast Concrete	12/15/2006		100	GMP Set			
03521	0	Insulating Concrete Fill	12/15/2006		100	GMP Set			
04100	0	Mortar & Grout	12/15/2006		100	GMP Set			
04300	0	Unit Masonry System	12/15/2006		100	GMP Set			
04340	0	Reinforced Unit Masonry System	12/15/2006		100	GMP Set			
05120	0	Structural Steel	12/15/2006		100	GMP Set			
05310	0	Steel Deck	12/15/2006		100	GMP Set			
05400	0	Cold Formed Metal Framing	12/15/2006		100	GMP Set			
05500	0	Metal Fabrications	12/15/2006		100	GMP Set			
05510	0	Metal Stairs	12/15/2006		100	GMP Set			
05520	0	Handrails & Railings	12/15/2006		100	GMP Set			
05531	0	Grating and Floor Plates	10/5/2006		50	Design/Development		Specification No Longer Included	
05805	0	Expansion Joint Assemblies	12/15/2006		100	GMP Set			
06100	0	Rough Carpentry	12/15/2006		100	GMP Set			
06410	0	Custom Casework	12/15/2006		100	GMP Set			
07120	0	Fluid Applied Waterproofing	12/15/2006		100	GMP Set			
07160	0	Bituminous Dampproofing	12/15/2006		100	GMP Set			
07181	0	Water Repellent Penetrant	12/15/2006		100	GMP Set			
07191	0	Vapor Retarders	12/15/2006		100	GMP Set			
07212	0	Extruded polystyrene Board Insulation	12/15/2006		100	GMP Set			
07213	0	Batt Insulation	12/15/2006		100	GMP Set			
07214	0	Foamed-in-Place Insulation	12/15/2006		100	GMP Set			
07255	0	Cementitious Fireproofing	12/15/2006		100	GMP Set			
07270	0	Firestopping	12/15/2006		100	GMP Set			
07320	0	Cement Roofing Tiles	12/15/2006		100	GMP Set			
07536	0	Modified Bitumen Roofing System	12/15/2006		100	GMP Set			
07620	0	Sheet Flashing & Trim	12/15/2006		100	GMP Set			
07724	0	Roof Hatches	12/15/2006		100	GMP Set			
07900	0	Joint Sealants	12/15/2006		100	GMP Set			



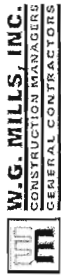
Current Drawing List
Summary Log, Grouped by Discipline

Number	Rev	Title	Rev Date	Bulletin	% Complete	Status	Category	General Notes	Ref RFI's
08110	0	Hollow Metal Doors & Frames	12/15/2006		100	GMP Set			
08210	0	Solid Core Wood Doors	12/15/2006		100	GMP Set			
08305	0	Access Doors/Hatches	12/15/2006		100	GMP Set			
08331	0	Rolling Service Doors	10/5/2006		50	Design/Development		Specification No Longer Included	
08333	0	Rolling Counter Doors	12/15/2006		100	GMP Set			
08520	0	Aluminum Windows	12/15/2006		100	GMP Set			
08521	0	Interior Hollow Metal Window Frames	12/15/2006		100	GMP Set			
08710	0	Finish Hardware	12/15/2006		100	GMP Set			
08800	0	Glass & Glazing	12/15/2006		100	GMP Set			
09111	0	Metal Stud Framing System	12/15/2006		100	GMP Set			
09206	0	Metal Furring & Lathing	12/15/2006		100	GMP Set			
09210	0	Gypsum Veneer Plaster	12/15/2006		100	GMP Set			
09215	0	Veneer Plaster	12/15/2006		100	GMP Set			
09220	0	Portland Cement Plaster	12/15/2006		100	GMP Set			
09240	0	Expanded Polystyrene Foam Molding	12/15/2006		100	GMP Set			
09250	0	Gypsum Board Systems	12/15/2006		100	GMP Set			
09311	0	Ceramic Tile	12/15/2006		100	GMP Set			
09330	0	Quarry Tile	12/15/2006		100	GMP Set			
09511	0	Suspended Acoustical Ceiling System	12/15/2006		100	GMP Set			
09520	0	Acoustical Wall Panels	12/15/2006		100	GMP Set			
09650	0	Resilient Flooring	12/15/2006		100	GMP Set			
09682	0	Carpet-Modular	12/15/2006		100	GMP Set			
09688	0	Carpet - Non Modular	10/5/2006		50	Design/Development		Specification No Longer Included	
09800	0	Special Wall Coating	10/5/2006		50	Design/Development		Specification No Longer Included	
09900	0	Painting	12/15/2006		100	GMP Set			
09910	0	Textured Coatings	12/15/2006		100	GMP Set			
10100	0	Marker Boards & Tack Boards	12/15/2006		100	GMP Set			
10171	0	Toilet Compartments, Urinal	12/15/2006		100	GMP Set			



Current Drawing List
Summary Log, Grouped by Discipline

Number	Rev	Title	Rev Date	Bulletin	% Complete	Status	Category	General Notes	Ref RFIs
Screens, Shower Cubicles									
10196	0	Cubicle Curtains	12/15/2006		100	GMP Set			
10211	0	Fixed Metal Wall Louvers	12/15/2006		100	GMP Set			
10260	0	Wall Protection Systems	12/15/2006		100	GMP Set			
10350	0	Flagpoles	12/15/2006		100	GMP Set			
10415	0	Display Cases	12/15/2006		100	GMP Set			
10420	0	Plaque	12/15/2006		100	GMP Set			
10441	0	Identifying Devices	10/5/2006		50	Design/Development		Specification No Longer Included	
10505	0	Metal Lockers	12/15/2006		100	GMP Set			
10508	0	Metal Wardrobe Lockers - General	10/5/2006		50	Design/Development		Specification No Longer Included	
10522	0	Fire Extinguishers, Cabinets, & Accessories	12/15/2006		100	GMP Set			
10532	0	Aluminum Walkway Covers	12/15/2006		100	GMP Set			
10605	0	Wire Mesh Partitions	12/15/2006		100	GMP Set			
10675	0	Metal Storage Shelving & Cabinets	12/15/2006		100	GMP Set			
10800	0	Toilet & Bath Accessories	12/15/2006		100	GMP Set			
11022	0	Key Box & Money Safe	12/15/2006		100	GMP Set			
11026	0	Safe	12/15/2006		100	GMP Set			
11030	0	Miscellaneous Equipment	12/15/2006		100	GMP Set			
11062	0	Stage Curtains Cotton	12/15/2006		100	GMP Set			
11131	0	Projection Screens	12/15/2006		100	GMP Set			
11135	0	Metal TV Wall Brackets	12/15/2006		100	GMP Set			
11400	0	Food Service Equipemtn	12/15/2006		100	GMP Set			
11450	0	Residential Appliances	12/15/2006		100	GMP Set			
11480	0	Athletic Equipment	12/15/2006		100	GMP Set			
11515	0	Kilns	12/15/2006		100	GMP Set			
12030	0	Miscellaneous Furnishings	12/15/2006		100	GMP Set			
12500	0	Window Vertical Blinds	12/15/2006		100	GMP Set			
12692	0	Surface Mounted Entrance Mats	12/15/2006		100	GMP Set			
13120	0	Metal Building Systems	12/15/2006		100	GMP Set			



Work Hard // Build Right

Current Drawing List
Summary Log, Grouped by Discipline

Number	Rev	Title	Rev Date	Bulletin	% Complete	Status	Category	General Notes	Ref RFIs
14245	0	Hydraulic Elevators - Passenger	12/15/2006		100	GMP Set			
15000	0	Basic Mechanical Requirements	12/15/2006		100	GMP Set			
15073	0	Minor Mechanical Demolition	12/15/2006		100	GMP Set			
15135	0	Liquid and Air Flow Meters, Gages and Thermometers	12/15/2006		100	GMP Set			
15140	0	Supports, Bases and Anchors	12/15/2006		100	GMP Set			
15170	0	Motors	12/15/2006		100	GMP Set			
15190	0	Mechanical Identification	12/15/2006		100	GMP Set			
15242	0	Vibration Isolation	12/15/2006		100	GMP Set			
15260	0	Piping Insulation	12/15/2006		100	GMP Set			
15280	0	Equipment Insulation	12/15/2006		100	GMP Set			
15290	0	Ductwork Insulation	12/15/2006		100	GMP Set			
15411	0	Potable Water Systems	12/15/2006		100	GMP Set			
15412	0	Soil and Waste Systems	12/15/2006		100	GMP Set			
15413	0	Storm Water Systems	12/15/2006		100	GMP Set			
15420	0	Plumbing Piping	12/15/2006		100	GMP Set			
15430	0	Plumbing Specialties	12/15/2006		100	GMP Set			
15440	0	Plumbing Fixtures & Accessories	12/15/2006		100	GMP Set			
15450	0	Plumbing Equipment	12/15/2006		100	GMP Set			
15500	0	Fire Protection	12/15/2006		100	GMP Set			
15510	0	Hydronic Piping	12/15/2006		100	GMP Set			
15515	0	Hydronic Specialties	12/15/2006		100	GMP Set			
15535	0	Refrigeration Piping and Specialties	12/15/2006		100	GMP Set			
15540	0	HVAC Pumps	12/15/2006		100	GMP Set			
15671	0	Air Cooled Air Conditioning Condensing Units	12/15/2006		100	GMP Set			
15682	0	Air Cooled Water Chillers	12/15/2006		100	GMP Set			
15765	0	Variable Frequency Drive Units	12/15/2006		100	GMP Set			
15781	0	Packaged Roof Top Air Conditioning Units	12/15/2006		100	GMP Set			



Work Hard // Build Right

Current Drawing List
Summary Log, Grouped by Discipline

Number	Rev	Title	Rev Date	Bulletin	% Complete	Status	Category	General Notes	Ref RFIs
15801	0	Water Treatment	12/15/2006		100	GMP Set			
15817	0	Electric Resistance Duct Heaters	12/15/2006		100	GMP Set			
15855	0	Air Handling Units	12/15/2006		100	GMP Set			
15870	0	Power Ventilators	12/15/2006		100	GMP Set			
15885	0	Air Filters	12/15/2006		100	GMP Set			
15890	0	Ductwork	12/15/2006		100	GMP Set			
15895	0	Ductwork Accessories	12/15/2006		100	GMP Set			
15900	0	Energy Management and Control System (Automated Logic)	12/15/2006		100	GMP Set			
15930	0	Variable Air Volume Terminal Units	12/15/2006		100	GMP Set			
15936	0	Grilles, Registers, Diffusers	12/15/2006		100	GMP Set			
15990	0	Start Up Requirements for HVAC Systems	12/15/2006		100	GMP Set			
15991	0	Testing, Adjusting and Balancing of HVAC Systems	12/15/2006		100	GMP Set			
15992	0	Tests - Piping Systems	12/15/2006		100	GMP Set			
16010	0	Basic Electrical Requirements	12/15/2006		100	GMP Set			
16020	0	Work Included	12/15/2006		100	GMP Set			
16025	0	Codes, Fees and Standards	12/15/2006		100	GMP Set			
16050	0	Basic Materials and Methods	12/15/2006		100	GMP Set			
16111	0	Conduit	12/15/2006		100	GMP Set			
16115	0	Indoor Service Pools	12/15/2006		100	GMP Set			
16117	0	Manholes	12/15/2006		100	GMP Set			
16123	0	Building Wire and Cable	12/15/2006		100	GMP Set			
16130	0	Boxes	12/15/2006		100	GMP Set			
16141	0	Wiring Devices	12/15/2006		100	GMP Set			
16160	0	Cabinets and Enclosures	12/15/2006		100	GMP Set			
16180	0	Equipment Wiring Systems	12/15/2006		100	GMP Set			
16190	0	Supporting Devices	12/15/2006		100	GMP Set			
16195	0	Electrical Identification	12/15/2006		100	GMP Set			
16420	0	Service Entrance	12/15/2006		100	GMP Set			



Work Hard // Build Right

Current Drawing List
Summary Log, Grouped by Discipline

Number	Rev	Title	Rev Date	Bulletin	% Complete	Status	Category	General Notes	Ref RFIs
16425	0	Switchboards	12/15/2006		100	GMP Set			
16440	0	Disconnect Switches	12/15/2006		100	GMP Set			
16450	0	Grounding	12/15/2006		100	GMP Set			
16461	0	Dry Type Transformers	12/15/2006		100	GMP Set			
16470	0	Panelboards	12/15/2006		100	GMP Set			
16476	0	Enclosed Circuit Breakers	12/15/2006		100	GMP Set			
16477	0	Fuses (600 Volt and Below)	12/15/2006		100	GMP Set			
16480	0	Motor Control	12/15/2006		100	GMP Set			
16485	0	Contractors	12/15/2006		100	GMP Set			
16495	0	Transfer Switch	12/15/2006		100	GMP Set			
16510	0	Interior Luminaries	12/15/2006		100	GMP Set			
16530	0	Site Lighting	12/15/2006		100	GMP Set			
16535	0	Emergency Lighting Equipment	12/15/2006		100	GMP Set			
16580	0	Theatrical Lighting	3/7/2007		50	Design/Development		Specification No Longer Included	
16610	0	Transient Voltage Surge Suppression	12/15/2006		100	GMP Set			
16622	0	Packaged Engine Generator System	12/15/2006		100	GMP Set			
16650	0	Energy Management and Control System	12/15/2006		100	GMP Set			
16670	0	Lightning Protection Systems	12/15/2006		100	GMP Set			
16721	0	Fire Alarm & Smoke Detection Systems	12/15/2006		100	GMP Set			
16722	0	Intrusion Detectio and Security Access System	12/15/2006		100	GMP Set			
16723	0	Video Surveillance System	12/15/2006		100	GMP Set			
16724	0	Emergency Radio Communications System	12/15/2006		100	GMP Set			
16725	0	Card Access System	12/15/2006		100	GMP Set			
16730	0	G.P.S. Wireless Clock Systems	12/15/2006		100	GMP Set			
16765	0	Intercom Systems	12/15/2006		100	GMP Set			
16770	0	Public Address System	12/15/2006		100	GMP Set			
16781	0	Master Television Antenna System (MTAS)	12/15/2006		100	GMP Set			



Current Drawing List
Summary Log, Grouped by Discipline

Number	Rev	Title	Rev Date	Bulletin	% Complete	Status	Category	General Notes	Ref RFIs
16902	0	Electric Controls and Relays	12/15/2006		100	GMP Set			
16905	0	Communications System (Data and Voice)	12/15/2006		100	GMP Set			
16906	0	Ceiling Projector System	12/15/2006		100	GMP Set			
Electrical									
A-704	1	Furniture Plan & Elevations Bldg. 1	2/12/2007		100	GMP Set		Building Department Comments	
E0-01	0	Electrical Site Plan	12/15/2006		100	GMP Set			
E0-02	0	Canopy Lighting Plan	12/15/2007		100	GMP Set			
E1-01	0	Bldg. 1 Sec. A Lighting Plan	12/15/2006		100	GMP Set			
E1-02	1	Bldg. 1 Sec. A Power Plan	2/9/2007		100	GMP Set		SDPBC Comments	
E1-03	0	Bldg. 1 Sec. A Systems Plan	12/15/2006		100	GMP Set			
E1-04	0	Bldg. 1 Sec. B & C Lighting Plan	12/15/2006		100	GMP Set			
E1-05	1	Bldg. 1 Sec. B & C Power Plan	2/9/2007		100	GMP Set		SDPBC Comments	
E1-06	0	Bldg. 1 Sec. B & C Systems Plan	12/15/2006		100	GMP Set			
E1-07	0	Bldg. 1 Sec. D Lighting Plan	12/15/2006		100	GMP Set			
E1-08	1	Bldg. 1 Sec. D Power Plan	2/9/2007		100	GMP Set		SDPBC Comments	
E1-09	0	Bldg. 1 Sec. D Systems Plan	12/15/2006		100	GMP Set			
E1-10	0	Bldg. 1 2nd Floor Sec. A Lighting Plan	12/15/2006		100	GMP Set			
E1-11	1	Bldg. 1 2nd Floor Sec. A Power Plan	2/9/2007		100	GMP Set		SDPBC Comments	
E1-12	00	Bldg. 1 2nd Floor Sec. A Systems Plan	12/15/2006		100	GMP Set			
E1-13	0	Bldg. 1 2nd Floor Sec. B Lighting Plan	12/15/2006		100	GMP Set			
E1-14	1	Bldg. 1 2nd Floor Sec. B Power Plan	2/9/2007		100	GMP Set		SDPBC Comments	
E1-15	0	Bldg. 1 2nd Floor Sec. B Systems Plan	12/15/2006		100	GMP Set			
E1-16	0	Bldg. 1 2nd Floor Sec. C Lighting Plan	12/15/2006		100	GMP Set			



Work Done / Done / Done

Current Drawing List
Summary Log, Grouped by Discipline

Number	Rev	Title	Rev Date	Bulletin	% Complete	Status	Category	General Notes	Ref RFIs
E1-17	1	Bldg. 1 2nd Floor Sec. C Power 2/9/2007 Plan	2/9/2007		100	GMP Set			
E1-18	0	Bldg. 1 2nd Floor Sec. C Systems Plan	12/15/2006		100	GMP Set			
E1-19	1	Bldg. 2 Lighting, Power & Systems Plan	2/9/2007		100	GMP Set			
E2-01	0	Enlarged Kitchen Plan	12/15/2006		100	GMP Set			
E2-02	0	1/2" Scale Plans & Elevations	12/15/2006		100	GMP Set			
E2-03	0	1/2" Scale Plans & Elevations	12/15/2006		100	GMP Set			
E2-04	0	1/2" Scale Plans & Elevations	12/15/2006		100	GMP Set			
E3-01	00	Electrical Power Riser	12/15/2006		100	GMP Set			
E3-02	0	Riser Diagram	12/15/2006		100	GMP Set			
E3-03	0	Riser Diagrams	12/15/2006		100	GMP Set			
E4-01	0	Notes, Legend & Fixture Schedule	12/15/2006		100	GMP Set			
E4-02	0	Miscellaneous Schedules	12/15/2006		100	GMP Set		SDPBC Comments	
E4-03	1	Panelboard Schedules	2/9/2007		100	GMP Set		SDPBC Comments	
E4-04	1	Panelboard Schedules	2/9/2007		100	GMP Set		SDPBC Comments	
E4-05	1	Panelboard Schedules	2/9/2007		100	GMP Set		SDPBC Comments	
E4-06	1	Panelboard Schedules	2/9/2007		100	GMP Set		SDPBC Comments	
E5-01	0	Miscellaneous Details	12/15/2006		100	GMP Set			
E5-02	0	Miscellaneous Details	12/15/2006		100	GMP Set			
E5-03	0	Miscellaneous Details	12/15/2006		100	GMP Set			
E5-04	0	Miscellaneous Details	12/15/2006		100	GMP Set			
E5-05	0	Miscellaneous Details	12/5/2006		100	GMP Set			
E5-06	0	Miscellaneous Details	12/15/2006		100	GMP Set			
E5-07	0	ITV Tower Details	12/15/2006		100	GMP Set			
Fire Protection									
FP-1	0	Fire Protection Legend, Notes & Details	12/15/2006		100	GMP Set			
FP-2	0	1st Floor Fire Protection Plan	12/15/2006		100	GMP Set			
FP-3	0	2nd Floor Fire Protection Plan	12/15/2006		100	GMP Set			

Prolog Manager

Printed on: 5/18/2007

WGMI DATABASE - ACTIVE



Number	Rev	Title	Rev Date	Bulletin	% Complete	Status	Category	General Notes	Ref RFIs
FP-4	0	Details	12/15/2006		100	GMP Set			
General									
Cover	0	Cover	3/2/2007		100	GMP Set			
GN-100	1	Cover Sheet / Drawing Index	3/2/2007		100	GMP Set			
GN-101	1	Index of Drawings	3/2/2007		100	GMP Set			
GN-103	0	General Notes, Abbreviations & Symbols	12/15/2006		100	GMP Set			
Interior Design									
ID-101	0	Finish Schedule - Building "1" - Ground Floor	12/15/2006		100	GMP Set			
ID-102	0	Finish Schedule - Building "1" - Ground Floor	12/15/2006		100	GMP Set			
ID-103	0	Finish Schedule - Building "1" - GF and Pat. 2nd FL	12/15/2006		100	GMP Set			
ID-104	0	Finish Schedule - Building "1" - Second Floor	12/15/2006		100	GMP Set			
ID-105	0	Finish Schedule - Building "2"	12/15/2006		100	GMP Set			
Landscape									
L1-0	0	Planting Plan	12/15/2006		100	GMP Set			
L1-1	0	Planting Details	12/15/2006		100	GMP Set			
L-2-3	0	Irrigation Details	12/15/2006		100	GMP Set			
L-2-0	0	Irrigation Plan	12/15/2006		100	GMP Set			
L-2-1	0	Irrigation Plan	12/15/2006		100	GMP Set			
L-2-2	0	Irrigation Plan	12/15/2006		100	GMP Set			
Mechanical									
M0-01	1	Legend Schedules & General Notes	2/9/2007		100	GMP Set		SDPBC Comments	
M0-02	1	Mechanical Schedules	2/9/2007		100	GMP Set		SDPBC Comments	



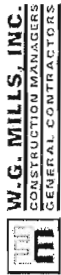
Current Drawing List
Summary Log, Grouped by Discipline

Number	Rev	Title	Rev Date	Bulletin	% Complete	Status	Category	General Notes	Ref RFIs
M0-03	1	Mechanical Schedules	2/9/2007		100	GMP Set		SDPBC Comments	
M0-04	1	Mechanical Schedules	2/9/2007		100	GMP Set		SDPBC Comments	
M0-05	0	Overall Mechanical Piping Plan	12/15/2006		100	GMP Set			
M1-01	1	Bldg. 1 Sec. B HVAC Plan	2/9/2007		100	GMP Set		SDPBC Comments	
M1-02	1	Bldg. 1 Sec. C HVAC Plan	2/9/2007		100	GMP Set		SDPBC Comments	
M1-03	1	Bldg. 1 Sec. D HVAC Plan	2/9/2007		100	GMP Set		SDPBC Comments	
M1-04	0	Bldg. 1 Partial 2nd Floor HVAC Plan	12/15/2006		100	GMP Set			
M1-05	0	Bldg. 1 Partial 2nd Floor HVAC Plan	12/15/2006		100	GMP Set			
M1-06	1	Bldg. 1 Partial 2nd Floor HVAC Plan	2/9/2007		100	GMP Set		SDPBC Comments	
M2-01	1	Mechanical Room Plan & Section	2/9/2007		100	GMP Set		SDPBC Comments	
M2-02	1	Mechanical Room Plan & Section	2/9/2007		100	GMP Set		SDPBC Comments	
M2-03	1	Mechanical Room Plan & Section	2/9/2007		100	GMP Set		SDPBC Comments	
M2-04	1	Mechanical Room Plan & Section	2/9/2007		100	GMP Set		SDPBC Comments	
M2-05	0	Mechanical Room Plan & Section	12/15/2006		100	GMP Set			
M2-06	1	Mechanical Room Plan & Section	2/9/2007		100	GMP Set		SDPBC Comments	
M2-07	0	Mechanical Chiller Yard Enclosure	12/15/2006		100	GMP Set			
M2-08	1	Chilled Water Schematic	2/9/2007		100	GMP Set		SDPBC Comments	
M3-01	0	Mechanical Details	12/15/2006		100	GMP Set			
M3-02	0	Mechanical Details	12/15/2006		100	GMP Set			
M3-03	0	Mechanical Details	12/15/2006		100	GMP Set			
M3-04	0	Mechanical Details	12/15/2006		100	GMP Set			
M3-05	0	Mechanical Details	12/15/2006		100	GMP Set			
M4-01	0	Mechanical Controls	12/15/2006		100	GMP Set			
M4-02	1	Mechanical Controls	2/9/2007		100	GMP Set		SDPBC Comments	



Current Drawing List
Summary Log, Grouped by Discipline

Number	Rev	Title	Rev Date	Bulletin	% Complete	Status	Category	General Notes	Ref RFIs
Plumbing									
P0-01	1	Schedules, Details & General Notes	2/12/2007		100	GMP Set		Comments	
P1-01	0	Bldg. 1 Part. 1st Floor Plbg. Plan	12/15/2006		100	GMP Set			
P1-02	0	Bldg. 1 Part. 1st Floor Plbg. Plan	12/15/2006		100	GMP Set			
P1-03	0	Bldg. 1 Part / P.E. Bldg. Plbg. Plan	12/15/2006		100	GMP Set			
P1-04	0	Bldg. 1 Part. 2nd Floor Plbg. Plan	12/15/2006		100	GMP Set			
P1-05	0	Bldg. 1 Part. 2nd Floor Plbg. Plan	12/15/2006		100	GMP Set			
P2-01	0	Enlarged Kitchen Plumbing Plan	12/15/2006		100	GMP Set			
P2-02	1	Enlarged Restroom Plans and Riser Diagrams	2/12/2007		100	GMP Set		Comments	
P2-03	0	Plumbing Roof Plan	12/15/2006		100	GMP Set		Comments	
P3-01	1	Riser Diagrams	2/12/2007		100	GMP Set		Comments	
P3-02	1	Kitchen Riser Diagrams	2/12/2007		100	GMP Set		Comments	
P3-03	1	Riser Diagrams	2/12/2007		100	GMP Set		Comments	
Site									
A-100	1	Overall Site Plan	2/12/2007		100	GMP Set		SDPBC Building Department Comments	
MS-100	0	Overall Master Site Plan	10/5/2006		50	Design/Development		Sheet No Longer Included	
Structural									
S-201	0	1st Floor Plan Sec. A	12/15/2006		100	GMP Set			
S-202	0	1st Floor Plan Sec. B	12/15/2006		100	GMP Set			
S-203	0	2st Floor Plan Sec. C	12/15/2006		100	GMP Set			
S-205	0	2nd Floor Plan Sec. A	12/15/2006		100	GMP Set			
S-206	0	2nd Floor Plan Sec. B	12/15/2006		100	GMP Set			



Current Drawing List
Summary Log, Grouped by Discipline

Number	Rev	Title	Rev Date	Bulletin	% Complete	Status	Category	General Notes	Ref RFIs
S-207	0	2nd Floor Plan Sec. C	12/15/2006		100	GMP Set			
S-208	0	2nd Floor Plan Sec. D	12/15/2006		100	GMP Set			
S-209	0	Roof Plan Sec. A	12/15/2006		100	GMP Set			
S-210	0	Roof Plan Sec. B	12/15/2006		100	GMP Set			
S-211	0	Roof Plan Sec. C	12/15/2006		100	GMP Set			
S-212	0	1st Floor & Roof Plan P.E. Shelter	12/15/2006		100	GMP Set			
S-213	0	Uplift Diagram & High Roof Framing Plan	12/15/2006		100	GMP Set			
S-301	0	General Notes & Schedules	12/15/2006		100	GMP Set			
S-302	0	Details	12/15/2006		100	GMP Set			
S-303	0	Schedules	12/15/2006		100	GMP Set			
S-401	0	Sections	12/15/2006		100	GMP Set			
S-402	0	Sections	12/15/2006		100	GMP Set			
S-403	0	Sections	12/15/2006		100	GMP Set			
S-501	0	Panel Schedules & Details	12/15/2006		100	GMP Set			
S-502	0	Panel Elevations	12/15/2006		100	GMP Set			
S-503	0	Panel Elevations	12/15/2006		100	GMP Set			
S-504	0	Panel Elevations	12/15/2006		100	GMP Set			
S-505	0	Panel Elevations	12/15/2006		100	GMP Set			



W.G. MILLS, INC.
CONSTRUCTION MANAGERS
GENERAL CONTRACTORS

W.G. MILLS, INC. CONSTRUCTION MANAGERS GENERAL CONTRACTORS		SUBCONTRACTOR PRE-QUALIFICATION SOLICITATION					West Boynton Elementary School	
DIV	SCOPE	SENT INVITATION	DECLINED OR REJECTED	SENT PLANS	M/WBE STATUS	SUBCONTRACTOR	ADDRESS	Responsive
4220	Masonry	2/19/2007		3/12/2007		Southern State Masonry	4599 10th Avenue North, Lake Worth, FL 33463	Yes
4220	Masonry	2/19/2007		3/12/2007		Chelle Construction	See BP 06	No
4220	Masonry				X	LMCC Specialty Contractors	P.O. Box 681554, Orlando, FL 32818	No
	08 Steel (Div. 5)							
5210	Structural Steel	1/12/2007		3/12/2007		Coral Steel Company	759 Benoit Farms Rd, West Palm Beach, FL 33411	No
5210	Structural Steel	2/19/2007	XX	3/12/2007		George's Welding Services, Inc.	11400 NW 134th Street, Miami, FL 33178	No
5000	Steel Erection	2/19/2007		3/12/2007		Industrial Steel	3567 Industrial Road, Titusville, FL 32796	No
5000	Metals	2/19/2007		3/12/2007	MBE	Litecrete, Inc.	8095 NW 64th Street, Miami, FL 33166	No
5000	Steel Erection	3/13/2007		3/13/2007		HMB Steel Corporation	4080 Pines Industrial Avenue, Rockledge, FL 32955	Yes
5000	Steel Erection			3/27/2007		Trident Building Systems	2812 Tallevast Road, Sarasota, FL 34243	Yes
						Skyline Steel	6681 NW 16th Ter., Ft. Lauderdale, FL 33309	Yes
6220	09 Millwork (Div. 6)							
6220	Millwork	1/10/2007		3/12/2007		FEQ-Salvarani	4100 NE 2nd Ave. Ste. 106 Miami, FL 33137	No
6220	Millwork	2/19/2007	XX			A. K. Wood Craft, Inc.	3821 Fiscal Court, Riviera Beach, FL 33404	No
6220	Millwork	3/16/2007		3/16/2007		Advanced Commercial Contracting, Inc.	22473 Pratt's Dairy Road, Abita Springs, LA 70420	Yes
6220	Millwork	2/19/2007		3/12/2007		Institutional Products, Inc.	1011 Northwest 6th Street, Homestead, FL 33030	Yes
6220	Millwork	2/19/2007		3/16/2007		Commercial Casework, Inc.	6500 Youngerman Circle, Jacksonville, FL 32244	Yes
6220	Installation	3/6/2007		3/12/2007		Kitchens Direct of Sarasota	7359 International Pl, Sarasota, FL 34240	No
						X-Treme SPD, Inc.	850529 US Hwy 17 S., Yulee, FL 32097	Yes
	10 Roofing (Div. 7)							
7550	Roofing	1/11/2007		3/12/2007		Colonial Construction	1811 Englewood Rd. # 300 Englewood, FL 34223	No
7550	Roofing	1/12/2007		3/12/2007		Top State Roofing	2660 NW 15 Ct. Ste. 106 Pompano Beach, FL 33069	Yes
7550	Roofing	1/12/2007		3/12/2007		M & M Roofing	5169 NW 74th Ave, Miami, FL 33166	No
7550	Roofing	1/12/2007		3/12/2007		Professional Roofing & Sales Inc.	11767 S. Dixie Hwy. # 341 Miami, FL 33156	No
7550	Roofing	1/12/2007		3/12/2007		Absolutely The Best roofing Co., LLC.	1490 S. Dixie Hwy. Pompano Beach, FL 33060	No
7550	Roofing	1/12/2007	XX			JV Metal Roofing	829 S. Kings Hwy. Ft. Pierce, FL 34945	No
7550	Roofing	2/19/2007		3/12/2007		L & W Roofing	4430 SE Commerce Ave., Stuart, FL 34997	Yes
7550	Roofing	2/19/2007		3/12/2007		Latite Roofing	2280 W Copans Rd. Pompano Beach, FL 33069	Yes
7550	Roofing	2/23/2007		3/12/2007		Ben's Roofing	1307 Central Terrace, Lake Worth, FL 33460	No
7550	Roofing	2/27/2007		3/12/2007		Heaton Roofing, Inc.	3371 SW 42nd Ave, Palm City, FL 34990	No
7550	Roofing	2/27/2007	XX			Sabon Metal Roofing	805 W Broward Blvd, Ft. Lauderdale, FL 33312	No
7550	Roofing	3/5/2007		3/12/2007		General Works Roofing	123 Industrial Drive N, Orange City, FL 32763	No
7550	Roofing	3/21/2007		3/21/2007		A-1 Duran Roofing, Inc.	595 West 18th Street, Hialeah, FL 33010	Yes
7810	Light Weight Concrete roof deck	2/23/2007		3/12/2007		Roof Decks, LLC	1514 Bernita Street, Jacksonville, FL 32211	No
7810	Fireproofing/Waterproofing	2/19/2007	XX			All State Fireproofing Inc. dba Gulf Coast Ins	1900 Australian Avenue, Riviera Beach, FL 33404	No
7810	Fireproofing	2/19/2007	XX			Maader Southeast, Inc.	8150 Presidents Drive, Orlando, FL 32809	No
	11 Doors, Frames & Hardware (Div. 8)							
8210	Doors, Frames & Hardware	2/19/2007	XX	3/13/2007		Lotspeich Company of Florida	7435 Central Industrial Dr. Ste. A, Riviera Beach, FL 33404	No
8210	Doors, Frames & Hardware	2/19/2007		3/13/2007		Domsky Enterprises, dba Total Quality Services	1850 SW Hackman Ter., Stuart, FL 34997	Yes
8210	Doors, Frames & Hardware			3/13/2007		Arc One, LLC	1350 Northwest 74th Street, Miami, FL 33147	Yes
8210	Doors, Frames & Hardware	1/17/2007		3/13/2007		Quality Engineered Products Co, Inc	4506 Quality Lane, Tampa, FL 33634	Yes
	12 Aluminum Windows, Glass & Glazing (Div. 8)							
8800	Windows	2/19/2007		3/13/2007		Superior Windows	9875 NW 79th Avenue, Hialeah Gardens, FL 33016	Yes
8800	Windows	3/13/2007		3/13/2007		NR Windows	4348 Westroads Drive, Riviera Beach, FL 33407	Yes
8800	Windows	3/13/2007		3/13/2007		Sunnyse Construction Services, Inc.	4475 SE Commerce Ave, Stuart, FL 34997	Yes
8800	Windows	3/13/2007		3/13/2007		Sol-A-Trol	4101 NW 132nd Street, Miami, FL 33054	No
	Windows & Door & Hardware	3/28/2007		3/28/2007		Oceanview Windows & Doors	4100 N. Powerline Road, Suite J-2, Pompano, FL 33073	Yes
9250	13 Drywall, Plaster & GIB (Div.9)							
9250	Drywall/Stucco	1/12/2007		3/13/2007		Gonima Constructors, Inc.	1406 Selbydon Way, Winter Garden, FL 34787	No



SUBCONTRACTOR PRE-QUALIFICATION SOLICITATION									
West Boynton Elementary School									
DIV	SCOPE	SENT INVITATION	DECLINED OR REJECTED	SENT PLANS	M/WBE STATUS	SUBCONTRACTOR	ADDRESS	Responsive	
9250	Drywall/Stucco	1/12/2007		3/13/2007		Republic Construction & Development	2449 Quantum Blvd. Boynton Beach, FL 33426	No	
9250	Drywall/Stucco	1/12/2007		3/13/2007		Designs by R&S, Inc.	4152 W. Blue Heron Ste. 120 Rivera Beach, FL 33404	Yes	
9200	Drywall/Stucco	2/19/2007		3/13/2007	X	Applegate Interiors	2100 2nd Avenue North, Ste. 5, Lake Worth, FL 33461	Yes	
9250	Drywall/Stucco	2/19/2007	XX	3/13/2007		Ralph Dellapetra	880 Jupiter Park Drive #13, Jupiter, FL 33455	No	
9250	Drywall/Stucco	2/26/2007		3/13/2007	X	D & D Quality Constructors, Inc.	1409 Forsythe Rd., West Palm Beach, FL 33405	Yes	
9250	Drywall/Stucco	2/19/2007	XX	3/13/2007		BC Industries, Inc.	3401 N. Federal Hwy., #214, Boca Raton, FL 33431	No	
9250	Drywall/Stucco	1/15/2007		3/13/2007		Lotsepech Company of Florida	7435 Central Industrial Dr., Ste. A, Riviera Beach, FL 33404	No	
9250	Drywall/Stucco	2/19/2007		3/13/2007		Violette Enterprises, Inc.	10101 NW 46th Street, Sunrise, FL 33351	Yes	
9250	Drywall/Stucco	2/19/2007		3/13/2007		G. O'Brien Construction Inc.	3339 NW 55th Street, Ft. Lauderdale, FL 33309	No	
9250	Drywall/Stucco	2/26/2007		3/13/2007		Alliant Interiors Services	208 N. US Highway 1 Ste. 2, Tequesta, FL 33469	Yes	
9250	Drywall/Stucco	3/5/2007		3/13/2007		Florida Contractors & Consultants Corp.	13440 Orange Grove Blvd, Royal Palm Bch, FL 33411	Yes	
						W P & S Contractor	3656 NW 16th Street, Lauderhill, FL 33311	Yes	
14 Acoustical Ceilings (Div. 9)									
9510	Acoustical Ceilings	2/19/2007		3/13/2007		Acousti Engineering	1530 - 53rd Street, West Palm Beach, FL 33407	Yes	
9510	Acoustical Ceilings	2/19/2007		3/13/2007		Alliant Interiors Services	208 N. US Highway 1 Ste. 2, Tequesta, FL 33469	No	
9510	Acoustical Ceilings	2/19/2007		3/13/2007	X	Applegate Interiors	2100 2nd Avenue North, Ste. 5, Lake Worth, FL 33461	No	
9510	Acoustical Ceilings	2/19/2007	XX	3/13/2007		Martin Acoustics	7991 S.W. Jack James Road, Stuart, FL 33410	Yes	
9510	Acoustical Ceilings	2/19/2007		3/13/2007		Florida Contractors & Consultants Corp.	13440 Orange Grove Blvd, Royal Palm Bch, FL 33411	Yes	
15 Resilient Flooring (Div. 9)									
9910	Flooring	1/12/2007		3/13/2007		Sunbelt Holdings/Horizon Surface Sys.	310 Scarlet Blvd. Oldsmar, FL 34677	No	
9910	Flooring (See Acous Ceilings)	2/19/2007		3/13/2007		Acousti Engineering	1530 - 53rd Street, West Palm Beach, FL 33407	Yes	
9910	Flooring	2/19/2007		3/13/2007		Zahanon's Tile	1338 South Killian Dr., Lake Park, FL 33403	Yes	
9910	Flooring	2/19/2007		3/13/2007		Commercial Flooring Contractors, Inc.	418 Nottingham Blvd., West Palm Beach, FL 33405	No	
9910	Flooring	2/19/2007		3/13/2007		Sunrise City Carpets	127 N Second Street, Ft. Pierce, FL 34850	No	
9910	Flooring	2/19/2007		3/13/2007		Alliant Interiors Services	208 N. US Highway 1 Ste. 2, Tequesta, FL 33469	Yes	
16 Ceramic Tile (Div. 9)									
9310	Ceramic Tile (see flooring)	2/19/2007		3/13/2007		Zahanon's Tile	1338 South Killian Dr., Lake Park, FL 33403	Yes	
9510	Ceramic Tile (see flooring)	2/19/2007		3/13/2007		Alliant Interiors Services	208 N. US Highway 1 Ste. 2, Tequesta, FL 33469	Yes	
17 Painting & Caulking (Div. 9)									
9900	Painting	1/11/2007		3/13/2007		All Brothers Painting, Inc.	3044 S. Military Trail Ste.G Lake Worth, FL 33463	No	
9900	Painting	1/12/2007		3/13/2007		Gonima Constructors, Inc.	606 Gagnon St. SE Palm Bay, FL 32909	No	
9900	Painting	2/19/2007		3/13/2007		Fleishers, Inc. Painting	Plans to: 500 Lordship Blvd., Stratford, CT 06615	Yes	
9220	Cementitious Coating	2/19/2007		3/13/2007		Nichols Industries	Mail: 533 15th St., West Palm Beach, FL 33401	No	
9900	Painting	2/19/2007		3/13/2007		Tubito Painting, Inc.	1557 Park Lane South Ste. 102, Jupiter, FL 33458	No	
9900	Painting	1/17/2007		3/13/2007		TWG Enterprises Waterproofing & Painting	1551 Southeast South Niemeyer Circle, Port St. Lucie, FL 34952	Yes	
9900	Painting	2/12/2007		3/13/2007		Paintpros, Inc.	605 SE 1st Ave, St H, Delray Beach, FL 33444	Yes	
9900	Painting	2/19/2007		3/13/2007		Peter Walsh Painting & Pressure Cleaning	126 Santander Court, Royal Palm Bch, FL 33411	No	
9900	Painting	1/12/2007		3/13/2007		Mullens Services, Inc.	11955 SW 133 Terrace, Miami, FL 33186	No	
9900	Painting	3/13/2007		3/13/2007	X	Applegate Interiors	2100 2nd Avenue North, Ste. 5, Lake Worth, FL 33461	No	
18 Misc Specialties and Equipment (Div. 10)									
11450	Specialties			3/14/2007		Florida Chalkboard, Co./Fl. Vis. Dis	40347 US Hwy 19 N, Ste. 117 Tarpon Springs, FL 34689	Yes	
11450	Specialties	1/12/2007		3/14/2007		Pro Tek Systems of Florida	2799 NW 2nd Ave. Boca Raton, FL 33431	No	
11000	Metal Storage Shelving/Lockers	2/19/2007		3/12/2007		List Industries, Inc.	1772 Southwest Choate Street, Port St. Lucie, FL 34953	No	
11450	Specialties	1/12/2007	XX	3/14/2007		Hdi Railing Systems	1200 Corporate Blvd. Lancaster, PA 17601	No	
11450	Specialties	1/12/2007		3/14/2007		Top Notch Window Covering	1099 Congress Ave. Bay # 18 Delray Beach, FL 33445	No	
11450	Specialties	1/12/2007		3/14/2007		Southeastern Group	1037 East Brandon Blvd. Brandon, FL 33511	No	
11450	Specialties	1/12/2007		3/14/2007		ChildSafe Everguard Surfacing	7300 Central Industrial Dr. Riviera Beach, FL 33404	Yes	
11450	Specialties	2/19/2007		3/14/2007	X	Lebolo Constr. Mgmt. Inc.	2100 Corporate Drive, Boynton Beach, FL 33426	No	
11450	Stage Curtain	3/6/2007		3/14/2007		Hile's Curtain Specialties, Inc.	6103 Johns Road Suite 1, Tampa, FL 33634	Yes	



W.G. MILLS, INC.
CONSTRUCTION MANAGERS
GENERAL CONTRACTORS

SUBCONTRACTOR PRE-QUALIFICATION SOLICITATION									
DIV	SCOPE	SENT INVITATION	DECLINED OR REJECTED	SENT PLANS	MWBE STATUS	SUBCONTRACTOR	ADDRESS	Responsive	
						West Boynton Elementary School			
11450	Toilet, Bath Accessories	2/19/2007		3/14/2007		Specialties Source, Inc.	3047 NW 60th Street, Ft. Lauderdale, FL 33309	Yes	
11450	Specialties	2/19/2007		3/14/2007		PW Hearn, Inc.	4512 Pine Cone Pl. 32926 (PO Box 237782, Cocoa, FL 32923)	Yes	
10440	Interior Signage	2/19/2007		3/14/2007	X	The Baron Group, Inc.	900 13th Street West, Riviera Beach, FL 33404	Yes	
10440	Signs	3/13/2007		3/14/2007	X	LMS Signs, Inc.	810 - 133rd Street East, Bradenton, FL 34212 Plans to: 1560 Northeast 36th Str. 33334	Yes	
11420	Toilet, Partitions/Accessories	2/19/2007	XX	3/14/2007		All Specialty Sales, Inc.	(Mail: PO Box 24735, Ft. Lauderdale, FL 33307)	No	
11450	Toilet Accessories (Also Doors/Hdw & DW)	1/25/2007	No Plans Sent			Lotspeich Company of Florida	7435 Central Industrial Dr., Ste. A, Riviera Beach, FL 33404	No	
	Sealing	1/17/2007				Newton Sealing Co.	1700NW 82nd Ave, Coral Springs, FL 33071	No	
	Window Treatments	1/25/2007		3/14/2007		Koeckritz Enterprises, Inc.	1731 Upland Road, WPB, FL 33409	No	
	Stage Curtains / window Treatment	1/25/2007		3/14/2007		National Stage & Window	236 S. Military Trail, Deerfield Bch, FL 33442	No	
	19 Aluminum Covered Walkways (Div. 7)								
7500	Aluminum Walkway Covers	2/19/2007		3/14/2007		American Walkway Covers	1831 NW 33rd Street, Pompano Beach, FL 33064	Yes	
7500	Aluminum Walkway Covers	2/19/2007		3/14/2007		Peachtree Protective Covers	1477 Rosedale Drive, Hiram, GA 30141	Yes	
7500	Aluminum Walkway Covers (Arch & Str on CD - TIFF)	2/19/2007		3/13/2007	X	D & D Quality Constructors, Inc.	1409 Forsythe Rd., West Palm Beach, FL 33405	No	
7500	Aluminum Walkway Covers	3/13/2007	XX			Walker Design & Construction	6630 E. Rogers Circle, Boca Raton, FL 33487	No	
	20 Food Service Equipment (Div. 11)								
11452	Food Service Equipment	2/19/2007		3/14/2007		Designs, Furnishings & Equipment, Inc.	889 Brentwood Drive, Daytona Beach, FL 32117	Yes	
11452	Food Service Equipment	2/19/2007		3/14/2007		Global Restaurant Equipment & Supply	650 NW 123rd Street, N. Miami, FL 33168	No	
11452	Food Service Equipment	1/12/2007		3/14/2007		Commerical Laundry Equipment Co., Inc.	1114 - 53rd Court So., WPB, FL 33407	Yes	
11452	Food Service Equipment	3/9/2007		3/14/2007		Bellram Food Services	6800 N. Florida Avenue, Tampa, FL 33604	Yes	
11452	Food Service Equipment			3/27/2007		Lace Food Service	10490 NW 26th Street, Miami, FL 33172	No	
	ELEVATORS (Div 14)								
	Elevator	3/14/2007		3/14/2007		Thyssenkrupp Elevators	7567 Central Industrial Drive, Riviera Beach, FL 33404	Yes	
	Elevator	3/14/2007		3/14/2007		Schindler Elevator Corp	13800 NW 2nd Street S#140, Sunrise, FL 33325	No	
	Elevator	3/14/2007		3/14/2007		Otis Elevator Inc.	16200 NW 59th Dr. St. 109, Hialeah, FL 33014	No	
	Elevator	3/14/2007		3/14/2007		Kone Elevator Inc	3901 Commerce Parkway, Miramar, FL 33025	No	
	21 Plumbing (Div. 15)								
15450	Plumbing	2/19/2007		3/12/2007		Coastal Mechanical Services	394 East Drive, Melbourne, FL 32904	Yes	
15450	Plumbing	2/19/2007		3/12/2007		Healey Plumbing	1238 SW 6th Street, Pompano Beach, FL 33069	Yes	
15450	Plumbing			3/12/2007		Wilbur Plumbing	1312 Commerce Lane Ste 1A, Jupiter, FL 33458	Yes	
	22 Fire Protection (Div. 15)								
7910	Fire Sprinkler	2/19/2007		3/12/2007		Protection Design Company, Inc.	5030 Champion Blvd., Box G-6-247 Boca Raton, FL 33496	Yes	
7910	Fire Sprinkler	2/19/2007		3/12/2007		Summer's Fire Sprinkler	3350 NW Boca Raton Blvd., Boca Raton, FL 33431 Plans to: 216 South F Street, Lake Worth, FL 33460	No	
7910	Fire Sprinkler	2/26/2007		3/12/2007		FireSafe, Inc.	Mail: 408 Mozart Road, West Palm Beach, FL 33411	No	
7910	Fire Sprinkler	2/26/2007		3/12/2007	X	Gold Coast Fire Equipment, Inc.	1065 Silver Beach Road #4, Riviera Beach, FL 33403	No	
15750	AC Plumbing & Piping	2/26/2007		3/12/2007		Farmer & Irwin Corporation	3300 Avenue K, Riviera Beach, FL 33404	Yes	
	23 H V A C (Div. 15)								
15750	HVAC (See Plg. Also)	2/19/2007		3/12/2007		Coastal Mechanical Services	394 East Drive, Melbourne, FL 32904	Yes	
15750	HVAC	2/19/2007		3/12/2007		HYVAC	3400 SW 10th Street, Deerfield Beach, FL 33442	Yes	
15750	HVAC	3/15/2007		3/20/2007		Southeast Mechanical Contractors, LLC	2120 SW 57th Terrace, Hollywood, FL 33023	No	
15750	HVAC		XX		X	Dolphin Sheet Metal	142 Jupiter Street, Jupiter, FL 33458	No	
15750	HVAC			3/27/2007		Altman Air	1125 Old Dixie Hwy, St #10, Lake Park FL 33403	No	
	24 Electrical (Div. 16)								
16000	Electrical			3/12/2007		DEC Electric, Inc.	3200 W. Copans Rd. Pompano Beach, FL 33069	No	
16000	Electrical	2/19/2007		3/12/2007		Capri Industries	136 North One Drive, St. Augustine, FL 32095	No	
16000	Electrical	2/27/2007		3/12/2007		C & F Electric Inc.	1660 NW 65th Ave Ste. 5, Plantation, FL 33313	No	
16000	Electrical	2/26/2007		3/12/2007		Dawco Electric	4885 Park Ridge Blvd., Boynton Beach, FL 33426	No	



SUBCONTRACTOR PRE-QUALIFICATION SOLICITATION

West Boynton Elementary School

DIV	SCOPE	SENT INVITATION	DECLINED OR REJECTED	SENT PLANS	M/WBE STATUS	SUBCONTRACTOR	ADDRESS	Responsive
16000	Electrical	2/26/2007		3/12/2007		Fastrac Electric	810 Saturn Street #25, Jupiter, FL 33477	No
16000	Electrical/EMS	2/26/2007		3/12/2007		Godfrey Electric	1222 Omar Rd., West Palm Beach, FL 33405	No
16890	Intercom/sound systems	2/26/2007	XX			NDR Corporation	3250 NE 12 Avenue, Oakland Park, FL 33334	No
16891	EMS System	2/27/2007	XX			RAO Electric	6670 B White Drive, West Palm Beach, FL 33407	No
16000	Electrical	2/26/2007		3/12/2007		Gerelco Electrical Contractors, Inc.	521 Northwest Enterprise Drive, Port St. Lucie, FL 34986	Yes
16000	Electrical	2/26/2007		3/12/2007		Bradford Electric, Inc.	3125 Jupiter Park Circle #3, Jupiter, FL 33458	Yes
16000	Electrical	2/26/2007	XX		X	Stratton Electric Inc.	7546 Enterprise Drive, West Palm Beach, FL 33404	No

Summary

West Boynton Elementary

Boynton Beach, Florida

Date: May 29, 2007

Owner: School District of Palm Beach County
 Architect: Zyscovich

Building Area (sf): 130,696
 A/C Area (sf): 116,964

Guaranteed Maximum Price



Work Hard // Build Right™

Section	Description	Estimated Quantity	Unit	100% Constr. Doc.	GMP Estimate	Variance	\$/SF Building	W/MBE Participation	
01000	General Conditions	1	ls	\$2,383,040	\$2,487,815	\$104,775	\$19.04	\$335,578	
02000	Site Work	1	ls	\$3,500,357	\$3,520,134	\$19,777	\$26.93	\$25,200	
03000	Concrete	1	ls	\$4,927,910	\$4,158,485	(\$769,425)	\$31.82	\$2,989,685	
04000	Masonry	1	ls	\$202,500	\$201,091	(\$1,409)	\$1.54		
05000	Structural Metals	1	ls	\$359,679	\$359,679		\$2.75		
06000	Carpentry	1	ls						
07000	Moisture/Damproofing	1	ls	\$660,693	\$660,693		\$5.06		
08000	Metal Doors & Frames	1	ls	\$907,425	\$804,390	(\$103,035)	\$6.15		
09000	Finishes	1	ls	\$2,025,593	\$2,052,694	\$27,101	\$15.71	\$1,576,151	
10000	Specialties	1	ls	\$546,266	\$518,428	(\$27,838)	\$3.97		
11000	Equipment	1	ls	\$384,652	\$403,060	\$18,408	\$3.08		
12000	Furnishings	1	ls	\$492,300	\$526,300	\$34,000	\$4.03		
13000	Special Construction	1	ls	\$93,222	\$93,222		\$0.71		
14000	Conveying Systems	1	ls	\$62,519	\$51,329	(\$11,190)	\$0.39		
15000	Mechanical Systems	1	ls	\$3,644,298	\$3,523,171	(\$121,127)	\$26.96		
16000	Electrical Systems	1	ls	\$3,203,125	\$3,085,000	(\$118,125)	\$23.60		
	Subtotal			\$23,393,579	\$22,435,491	(\$958,088)	\$171.66	\$4,926,614	
	Materials Testing	1	allw	\$42,500	NIC	(\$42,500)			
	Exterior Envelope Consultant	1	ls		\$42,500	\$42,500	\$0.33		
	Permit & Impact Fees	1	ls	NIC	NIC				
	Contingency	2	%	\$701,807	\$448,710	(\$253,098)	\$3.43		
	Sub Guard	1	ls	\$252,126	\$241,098	(\$11,028)	\$1.84		
	GENERAL REQUIREMENTS								
	Construction Manager's Bond	1	ls	\$185,834	\$176,352	(\$9,482)	\$1.35		
	Liability Insurance - By Owner	1	ls						
	MICCS & Data Processing	1	ls	\$87,736	\$83,339	(\$4,397)	\$0.64		
	Builder's Risk Insurance	1	ls	By Owner	By Owner				
	Sales Tax Savings	1	ls	(\$292,420)	(\$280,444)	\$11,976	(\$2.15)		
	FEE	5	%	\$1,233,179	\$1,171,374	(\$61,805)	\$8.96		
	Total-Lump Sum Amount			\$25,604,342	\$24,318,420	(\$1,285,922)	\$186.07	21.96%	

***	Deduct Pase 1 - Site GMP From Total Above	(\$1,173,957)
***	Total For GMP Phase 2 - vertical Construction	\$23,144,463

Detail Summary

West Boynton Elementary

Boynton Beach, Florida

Date: May 29, 2007

Owner: School District of Palm Beach County
 Architect: Zyscovich

Building Area (sf): 130,696
 A/C Area (sf): 116,964

Guaranteed Maximum Price



Section	Description	Estimated Quantity	Unit	100% Constr. Doc.	GMP Estimate	Variance	\$/SF Building	\$/Unit Actual	W/MBE Participation
01000	General Conditions								
	General Conditions	15	mo	\$901,201	\$869,201	(\$32,000)	\$6.65	\$57,946.73	
	Staffing	15	mo	\$1,410,839	\$1,410,839		\$10.79	\$94,055.93	\$335,578
	Mobilization / Safety / Security	1	ls						
	Cleaning	1	ls	\$71,000	\$63,975	(\$7,025)	\$0.49	\$63,975.00	
	Temporary Fencing	1	ls		\$25,200	\$25,200	\$0.19	\$25,200.00	\$25,200
	Construction Dumpster	1	ls		\$95,650	\$95,650	\$0.73	\$95,650.00	
	Temp Haul Road	1	ls		\$22,950	\$22,950	\$0.18	\$22,950.00	
	Division 1 Totals			\$2,383,040	\$2,487,815	\$104,775	\$19.04		\$335,578
02000	Site Work								
	Engineering Layout (Interior)	21	ac	C-Conc	C-Conc				
	Erosion Control / Construct Ent.	1	ls	C-Earth	C-Earth				
	Site Grading	160,591	sy	\$570,799	\$570,799		\$4.37	\$3.55	
	Fine Grade Building Pad	9,688	sy	C-Earth	C-Earth				
	Soil Poisoning	87,191	sf	C-Conc	C-Conc				
	Fine Grade Paving	18,274	sy	C-Pave	C-Pave				
	8" Stabilized Sub-Base	18,190	sy	C-Pave	C-Pave				
	6" Cement Treated Base	18,274	sy	C-Pave	C-Pave				
	Storm Sewer	1	ls	C-Earth	C-Earth				
	Sanitary Sewer	1	ls	C-Pave	C-Pave				
	Water Services	1	ls	C-Pave	C-Pave				
	Asphalt Paving	18,190	sy	\$1,700,374	\$1,700,374		\$13.01	\$93.48	
	Concrete Curb	9,886	lf	C-Pave	C-Pave				
	Concrete Sidewalk	67,940	sf	C-Pave	C-Pave				
	Site Equipment Pads	3,035	sf	C-Pave	C-Pave				
	Striping	2,556	lf	C-Pave	C-Pave				
	Landscape	21	allw	\$703,023	\$360,000	(\$343,023)	\$2.75	\$17,475.73	
	Irrigation	21	ac	C- Landscape	C- Landscape				
	Grass	181,716	sf	C- Landscape	C- Landscape				
	Covered Sidewalk	8,094	sf	C-Pave	C-Pave				
	Parking Bumpers	214	ea	C-Pave	C-Pave				
	Bike Rack	8	ea	C-Marker	C-Marker				
	Benches	150	lf	\$3,750	NIC	(\$3,750)			
	Bleachers	50	lf	\$7,500	NIC	(\$7,500)			
	Kindergarten Playground (Equip. & Surface)	1	allw	\$120,000	\$120,000		\$0.92	\$120,000.00	
	Exterior Basketball Court (Concrete)	24,052	sf	C-Conc	C-Conc				
	Softball Field	30,916	sf	C-Pave	C-Pave				
	Multipurpose Field	49,618	sf	C- Landscape	C- Landscape				
	Monumental Sign Allowance	1	ls	C-Marker	C-Marker				
	Chain Link Fence - non coated	9,529	lf	\$251,111	\$180,907	(\$70,204)	\$1.38	\$18.98	
	Chain Link Swing Gate Allowance	16	ea	C-Fence	C-Fence				
	Chain Link Rolling Gate Allowance	3	pr	C-Fence	C-Fence				
	Boynton Landscape Buffer - Trees Allowance	30	ea	C- Landscape	C- Landscape				
	Boynton Landscape Buffer - Grass	23,600	sf	C- Landscape	C- Landscape				
	Boynton Landscape Buffer - Irrigation	1	allw	C- Landscape	C- Landscape				
	Turn Lanes on Boynton Beach Blvd - Allowance	1	allw		\$153,054	\$153,054	\$1.17	\$153,054.00	
	Vibrocompaction Allowance	1	allw		\$435,000	\$435,000	\$3.33	\$435,000.00	
	Bus Loop Drain Pipe (72") for LWDD	50	lf	C-Earth	C-Earth				
	Temporary Fencing	1	ls	\$25,200		(\$25,200)			\$25,200
	Construction Dumpster	1	ls	\$95,650		(\$95,650)			
	Temp Haul Road	1	ls	\$22,950		(\$22,950)			

Detail Summary

Section	Description	Estimated Quantity	Unit	100% Constr. Doc.	GMP Estimate	Variance	\$/SF Building	\$/Unit Actual	W/MBE Participation
Division 2 Total					\$3,500,357	\$3,520,134	\$19,777	\$26.93	\$25,200
03000	Concrete								
	Building Equipment Pads	5	cy	C-Tilt	C-Tilt				
	Transformer	5	cy	C-Tilt	C-Tilt				
	Emergency Generator	1	al	C-Tilt	C-Tilt				
	PSI Joists	83,902	sf	C-Tilt	\$1,168,800	\$1,168,800	\$8.94	\$13.93	
	Fig / Thickened Slabs	699	cy	C-Tilt	C-Tilt				
	Elevator Pits	1	ea	C-Tilt	C-Tilt				
	5" Slab on Grade	87,191	sf	C-Tilt	C-Tilt				
	Elevated Slabs	81,336	sf	C-Tilt	C-PSI				
	Reinforcing Steel	1	ls	C-Tilt	C-Tilt				
	Interior Concrete Stairs	100	rsr	C-Tilt	C-Tilt				
	Concrete for Pipe Bollards	36	ea	C-Tilt	C-Tilt				
	8" Tilt-Wall Panels	58,068	sf	\$4,927,910	\$2,989,685	(\$1,938,225)	\$22.88	\$51.49	\$2,989,685
	Beams / Columns	195	cy	C-Tilt	C-Tilt				
Division 3 Total					\$4,927,910	\$4,158,485	\$31.82		\$2,989,685
04000	Masonry								
	Concrete Block Exterior - 8" CMU	3,720	sf	C-8" Int	C-8" Int				
	Concrete Block Interior - 8" CMU	12,346	sf	\$202,500	\$201,091	(\$1,409)	\$1.54	\$16.29	
	8"x4" Precast Concrete Sills	512	lf	C-8" Int	C-8" Int				
	18' Chiller Walls (Acoustic CMU)	2,862	sf	NIC	NIC				
Division 4 Total					\$202,500	\$201,091	\$1.54		
05000	Structural Metals								
	Misc. Steel	1	allw	\$256,979	\$256,979		\$1.97	\$256,979.00	
	Metal Trusses	4,155	sf	\$102,700	\$102,700		\$0.79	\$24.72	
	Canopy Framing Allowance @ Stage	2,000	sf	C-Misc Steel	C-Misc Steel				
	Stair Railings	312	lf	C-Misc Steel	C-Misc Steel				
	Stair Hand Rails	312	lf	C-Misc Steel	C-Misc Steel				
	Roof Ladders	3	ea	C-Misc Steel	C-Misc Steel				
	Pipe Bollard Allowance	36	ea	C-Misc Steel	C-Misc Steel				
	Elevator Hoist Beams & Sill Angles	1	ls	C-Misc Steel	C-Misc Steel				
Division 5 Total					\$359,679	\$359,679	\$2.75		
06000	Carpentry								
	Rough Carpentry Allowance	1	ls	C-Roof	C-Roof				
	Reception Desk Allowance	45	lf	C-Casework	C-Casework				
Division 6 Total									
07000	Moisture/Damproofing								
	Rigid Roof Insulation	38,000	sf	C-Roof	C-Roof				
	Insulation - Exterior Walls	47,058	sf	C-Drywall	C-Drywall				
	Waterproofing - Drylock	3,720	sf	C-Paint	C-Paint				
	Roofing	85,238	sf	\$660,693	\$660,693		\$5.06	\$7.75	
	Gutters & Down Spouts	879	lf	C-Roof	C-Roof				
	Tilt up wall joint sealing	1,858	lf	C-Paint	C-Paint				
	Parapet Flashing	6,972	sf	C-Roof	C-Roof				
	Metal Coping - Parapet	2,474	sf	C-Roof	C-Roof				
	Caulking/Sealants	1	ls	C-Paint	C-Paint				
	Roof Access Hatches	6	ea	C-Roof	C-Roof				
	Caulking Expansion Joints - Security - 8'	308	lf	C-Paint	C-Paint				
	Caulking Expansion Joints - Above 8'	2,671	lf	C-Paint	C-Paint				
Division 7 Total					\$660,693	\$660,693	\$5.06		

Detail Summary

Section	Description	Estimated Quantity	Unit	100% Constr. Doc.	GMP Estimate	Variance	\$/SF Building	\$/Unit Actual	W/MBE Participation
Division 11 Total					\$384,652	\$403,060	\$18,408	\$3.08	
12000	Furnishings								
	Vertical Blinds	4,551	sf	C-Marker	C-Marker				
	Casework - Counters	754	lf	C-Casework	C-Casework				
	Casework - Cabinets	2,580	lf	\$492,300	\$516,300	\$24,000	\$3.95	\$200.12	
	Casework - Wall Cabinets	725	lf	C-Casework	C-Casework				
	Cubbies	773	lf	C-Casework	C-Casework				
	Computer Stations	60	ea	C-Casework	C-Casework				
Division 12 Total					\$492,300	\$516,300	\$24,000	\$3.95	
13000	Special Construction								
	Metal Building Systems	3,025	sf	\$93,222	\$93,222		\$0.71	\$30.82	
Division 13 Total					\$93,222	\$93,222	\$0.71		
14000	Conveying Systems								
	Hydraulic Elevators - 2500 lb	2	stop	\$62,519	\$51,329	(\$11,190)	\$0.39	\$25,664.50	
	Temp Use Charge	1	ls	C-Elev	NIC				
Division 14 Total					\$62,519	\$51,329	\$0.39		
15000	Mechanical Systems								
	Fire Protection	130,696	sf	\$441,685	\$441,685		\$3.38	\$3.38	
	Plumbing	169	fixt	\$782,653	\$782,653		\$5.99	\$4,631.08	
	Interior Roof Drains	3,000	sf	C-Plumb	C-Plumb				
	Elevator Sump Pumps	1	ea	C-Plumb	C-Plumb				
	Food Service Equip. Rough-in	3,626	sf	C-Plumb	C-Plumb				
	HVAC - Two Pipe	116,964	sf	\$2,419,960	\$2,298,833	(\$121,127)	\$17.59	\$19.65	
Division 15 Total					\$3,644,298	\$3,523,171	\$26.96		
16000	Electrical Systems								
	1,000A, 480V U/G Feeder Allowance	750	lf	C-Elec	C-Elec				
	Electric System	130,696	sf	\$3,203,125	\$3,085,000	(\$118,125)	\$23.60	\$23.60	
	Emergency Generator	1	ls	C-Elec	C-Elec				
	Site Lighting Allowance	21	ac	C-Elec	C-Elec				
	I-Quest system	1	ls	C-Elec	C-Elec				
	Phone / Data Grounding & Conduit	1	ls	C-Elec	C-Elec				
	Fire Alarm	1	ls	C-Elec	C-Elec				
	Lightning Protection	1	ls	C-Elec	C-Elec				
Division 16 Total					\$3,203,125	\$3,085,000	\$23.60		
Subtotal					\$23,393,579	\$22,435,491	(\$958,088)	\$171.66	\$4,926,614
	Materials Testing	1	allw	\$42,500	NIC	(\$42,500)			
	Exterior Envelope Consultant	1	ls		\$42,500	\$42,500	\$0.33		
	Permit & Impact Fees	1	ls	NIC	NIC				
	Contingency	2	%	\$701,807	\$448,710	(\$253,098)	\$3.43		
	Sub Guard	1	ls	\$252,126	\$241,098	(\$11,028)	\$1.84		
GENERAL REQUIREMENTS									
	Construction Manager's Bond	1	ls	\$185,834	\$176,352	(\$9,482)	\$1.35		
	Liability Insurance - By Owner	1	ls						
	MICCS & Data Processing	1	ls	\$87,736	\$83,339	(\$4,397)	\$0.64		
	Builder's Risk Insurance	1	ls	By Owner	By Owner				
	Sales Tax Savings	1	ls	(\$292,420)	(\$280,444)	\$11,976	(\$2.15)		
	FEE	5	%	\$1,233,179	\$1,171,374	(\$61,805)	\$8.96		
Total-Lump Sum Amount					\$25,604,342	\$24,318,420	(\$1,285,922)	\$186.07	21.96%

West Boynton Elementary

Boynton Beach, Florida

Date: May 29, 2007

Owner: School District of Palm Beach County
 Architect: Zyscovich

Building Area (sf): 130,696
 A/C Area (sf): 116,964

Guaranteed Maximum Price



Section	Description	Estimated Quantity	Unit	100% Constr. Doc.	GMP Estimate	Variance	\$/SF Building	\$/Unit Actual	W/MBE
02000	Site Work								
	Engineering Layout (Interior	21	ac	C-Conc	C-Conc				
	Erosion Control / Construct Ent	1	ls	C-Earth	C-Earth				
	Site Grading	160,591	sy		\$570,799		\$4.37	\$3.55	
	Fine Grade Building Pad	9,688	sy	C-Earth	C-Earth				
	Soil Poisoning	87,191	sf	C-Conc	C-Conc				
	Fine Grade Paving	18,274	sy	C-Pave	C-Pave				
	8" Stabilized Sub-Base	18,190	sy	C-Pave	C-Pave				
	6" Cement Treated Base	18,274	sy	C-Pave	C-Pave				
	Storm Sewer	1	ls	C-Earth	C-Earth				
	Sanitary Sewer	1	ls	C-Pave	C-Pave				
	Water Services	1	ls	C-Pave	C-Pave				
	Asphalt Paving	18,190	sy		\$1,700,374		\$13.01	\$93.48	
	Concrete Curb	9,886	lf	C-Pave	C-Pave				
	Concrete Sidewalk	67,940	sf	C-Pave	C-Pave				
	Site Equipment Pads	3,035	sf	C-Pave	C-Pave				
	Striping	2,556	lf	C-Pave	C-Pave				
	Landscape	21	allw		\$703,023	(\$343,023)	\$2.75	\$17,475.73	
	Irrigation	21	ac	C- Landscape	C- Landscape				
	Grass	181,716	sf	C- Landscape	C- Landscape				
	Covered Sidewalk	8,094	sf	C-Pave	C-Pave				
	Parking Bumpers	214	ea	C-Pave	C-Pave				
	Bike Rack	8	ea	C-Marker	C-Marker				
	Benches	150	lf		\$3,750	(\$3,750)			
	Bleachers	50	lf		\$7,500	(\$7,500)			
	Kindergarten Playground (Equip. & Surface)	1	allw		\$120,000		\$0.92	\$120,000.00	
	Exterior Basketball Court (Concrete)	24,052	sf	C-Conc	C-Conc				
	Softball Field	30,916	sf	C-Pave	C-Pave				
	Multipurpose Field	49,618	sf	C- Landscape	C- Landscape				
	Monumental Sign Allowanc	1	ls	C-Marker	C-Marker				
	Chain Link Fence - non coatc	9,529	lf		\$251,411	(\$70,214)	\$1.38	\$18.98	
	Chain Link Swing Gate Allowanc	16	ea	C-Fence	C-Fence				
	Chain Link Rolling Gate Allowanc	3	pr	C-Fence	C-Fence				
	Boynton Landscape Buffer - Trees Allowance	30	ea	C- Landscape	C- Landscape				
	Boynton Landscape Buffer - Gras	23,600	sf	C- Landscape	C- Landscape				
	Boynton Landscape Buffer - Irrigation	1	allw	C- Landscape	C- Landscape				
	Turn Lanes on Boynton Beach Blvd - Allowance	1	allw		\$153,054	\$153,054	\$1.17	\$153,054.00	
	Vibrocompaction Allowanac	1	allw		\$435,000	\$435,000	\$3.33	\$435,000.00	
	Bus Loop Drain Pipe (72") for LWDD	50	lf	C-Earth	C-Earth				
	Temporary Fencing	1	ls		\$25,200	(\$25,200)			\$25,200
	Construction Dumpster	1	ls		\$95,650	(\$95,650)			
	Temp Haul Road	1	ls		\$22,950	(\$22,950)			
	Contingency	1	ls		-	-			-
	Subtotal				\$3,500,357	\$3,520,134	\$19,777	\$26.93	\$25,200

West Boynton Elementary

Boynton Beach, Florida

Date: May 18, 2007

Owner: School District of Palm Beach County
 Architect: Zyscovich

Building Area (sf): 130,696
 A/C Area (sf): 116,964

Guaranteed Maximum Price



Work Hard // Build Right™

Section	Description	Estimated Quantity	Unit	100% Constr. Doc.	GMP Estimate	Variance	\$/SF Building	\$/Unit Actual	W/MBE
06000	Carpentry								
	Rough Carpentry Allowance	1	ls	C-Roof	C-Roof				
	Reception Desk Allowance	45	lf	C-Casework	C-Casework				
	Contingency	1	ls	-	-				-
	Subtotal								

West Boynton Elementary

Boynton Beach, Florida

Date: May 18, 2007

Owner: School District of Palm Beach County
 Architect: Zyscovich

Building Area (sf): 130,696
 A/C Area (sf): 116,964

Guaranteed Maximum Price



Section	Description	Estimated Quantity	Unit	100% Constr. Doc.	GMP Estimate	Variance	\$/SF Building	\$/Unit Actual	W/MBE
09000	Finishes								
	GWB Partitions	51,647	sf	C-Drywall	C-Drywall				
	GWB Ceilings / Soffits	1,090	sf	C-Drywall	C-Drywall				
	Dry Wall	167,368	sf	\$1,156,500	\$1,156,500		\$8.85	\$6.91	\$1,156,500
	Acoustic Ceilings	124,821	sf	\$196,162	\$196,162		\$1.50	\$1.57	
	Stucco Exterior	6,852	sf	C-Drywall	C-Drywall				
	Texcoat Exterior Walls	59,528	sf	C-Paint	C-Paint				
	EIFS Accents - 6"	2,954	lf	C-Drywall	C-Drywall				
	Ceramic Tile Floors - Rest Rms	5,556	sf	C-Tile	C-Tile				
	Ceramic Tile Walls - Rest Rms	24,577	sf	\$209,675	\$207,676	(\$1,999)	\$1.59	\$8.45	\$207,676
	Quarry Tile	4,154	sf	C-Tile	C-Tile				
	VCT	99,778	sf	\$182,875	\$211,975	\$29,100	\$1.62	\$2.12	\$211,975
	Carpeting	346	sy	C-VCT	C-VCT				
	Interior Painting	167,368	sf	\$280,381	\$280,381		\$2.15	\$1.68	
	Contingency	1	ls	-	-				-
	Subtotal			\$2,025,593	\$2,052,694	\$27,101	\$15.71		\$1,576,151

West Boynton Elementary

Boynton Beach, Florida

Date: May 18, 2007

Owner: School District of Palm Beach County
 Architect: Zyscovich

Building Area (sf): 130,696
 A/C Area (sf): 116,964

Guaranteed Maximum Price



Section	Description	Estimated Quantity	Unit	100% Constr. Doc.	GMP Estimate	Variance	\$/SF Building	\$/Unit Actual	W/MBE
12000	Furnishings								
	Vertical Blinds	4,551	sf	C-Marker	C-Marker				
	Casework - Counters	754	lf	C-Casework	C-Casework				
	Casework - Cabinets	2,580	lf	\$492,300	\$516,300	\$24,000	\$3.95	\$200.12	
	Casework - Wall Cabinets	725	lf	C-Casework	C-Casework				
	Cubbies	773	lf	C-Casework	C-Casework				
	Computer Stations	60	ea	C-Casework	C-Casework				
	Surface Mounted Entrance Mats	1	allw		\$10,000	\$10,000	\$0.08	\$10,000.00	
	Contingency	1	ls	-	-				-
	Subtotal			\$492,300	\$526,300	\$34,000	\$4.03		

West Boynton Elementary

Boynton Beach, Florida

Date: May 18, 2007

Owner: School District of Palm Beach County
 Architect: Zyscovich

Building Area (sf): 130,696
 A/C Area (sf): 116,964

Guaranteed Maximum Price



Section	Description	Estimated Quantity	Unit	100% Constr. Doc.	GMP Estimate	Variance	\$/SF Building	\$/Unit Actual	W/MBE
13000	Special Construction								
	Metal Building Systems	3,025	sf	\$93,222	\$93,222		\$0.71	\$30.82	
	Contingency	1	ls	-	-				-
	Subtotal			\$93,222	\$93,222		\$0.71		

West Boynton Elementary

Boynton Beach, Florida

Date: May 18, 2007

Owner: School District of Palm Beach County
 Architect: Zyscovich

Building Area (sf): 130,696
 A/C Area (sf): 116,964

Guaranteed Maximum Price



Section	Description	Estimated Quantity	Unit	100% Constr. Doc.	GMP Estimate	Variance	\$/SF Building	\$/Unit Actual	W/MBE
14000	Conveying Systems								
	Hydraulic Elevators - 2500 lb	2	stop		\$62,519	\$51,329	(\$11,190)	\$0.39	\$25,664.50
	Temp Use Charge	1	ls	C-Elev	NIC				
	Contingency	1	ls	-	-				-
	Subtotal				\$62,519	\$51,329	(\$11,190)	\$0.39	

West Boynton Elementary

Boynton Beach, Florida

Date: May 18, 2007

Owner: School District of Palm Beach County
 Architect: Zyscovich

Building Area (sf): 130,696
 A/C Area (sf): 116,964

Guaranteed Maximum Price



Section	Description	Estimated Quantity	Unit	100% Constr. Doc.	GMP Estimate	Variance	\$/SF Building	\$/Unit Actual	W/MBE
16000	Electrical Systems								
	1,000A, 480V U/G Feeder Allowance	750	lf	C-Elec	C-Elec				
	Electric System	130,696	sf	\$3,203,125	\$3,085,000	(\$118,125)	\$23.60	\$23.60	
	Emergency Generator	1	ls	C-Elec	C-Elec				
	Site Lighting Allowance	20.6	ac	C-Elec	C-Elec				
	I-Quest system	1	ls	C-Elec	C-Elec				
	Phone / Data Grounding & Conduit	1	ls	C-Elec	C-Elec				
	Fire Alarm	1	ls	C-Elec	C-Elec				
	Lightning Protection	1	ls	C-Elec	C-Elec				
	Contingency	1	ls	-	-				-
	Subtotal			\$3,203,125	\$3,085,000	(\$118,125)	\$23.60		

May 2nd, 2007

W. G. MILLS, INC.
WEST BOYNTON BEACH ELEMENTARY SCHOOL
NEW CONSTRUCTION
PROJECT NO: 0281-8243

FEE PROPOSAL

CONSTRUCTION PHASE - Based on 15 month duration (5/1/07 - 6/1/08 SC, 8/1/08 FINAL)

Description Staffing	% Utilization	Quantity	Unit	Total	MBE Total
MANAGEMENT AND SUPERVISION					
Project Executive, Tim Hensey	10%	65 wks	\$6,000	\$39,000	
Co-Project Director, Dean Crowley / Lyndell Mims	30% (20/10)	65 wks	\$4,143	\$80,789	\$26,930
Safety/ Quality Director, Greg Thompson	10%	65 wks	\$3,000	\$19,500	
Project Manager, Jason Wilson	100%	65 wks	\$3,500	\$227,500	
Assistant Project Manager, David Cutlip	100%	65 wks	\$2,190	\$142,350	
Project Engineer, QAP, Mims - Andre Collins	100%	60 wks	\$3,000	\$180,000	\$180,000
Lead Superintendent, Rafael Echemendia	100%	65 wks	\$3,500	\$227,500	
Asst Superintendent, TBA	100%	60 wks	\$2,255	\$135,300	
Field Asst, TBA	100%	60 wks	\$2,180	\$130,800	
Field Secretary, TBA, Mims Construction	100%	65 wks	\$1,350	\$87,750	\$87,750
Salary adjustments (9/1/07)	7%	48 wks	\$20,008	\$67,226	\$20,628
Vehicle Gas and Oil	7.5	65 wks	\$150	\$73,125	\$20,475

TOTAL CONSTRUCTION PHASE FEE				\$1,410,839	\$335,782
					23.80%

W. G. MILLS, INC.

West Boynton Elementary School

ESTIMATE OF GENERAL CONDITIONS COST BASED ON 15 MONTH CONSTRUCTION PHASE

DESCRIPTION/ FACILITIES

	QUANT	UNIT M	MATL	UNIT L	LABOR	UNIT E	EQUIP	TOTAL
FIELD OFFICE/ SUPPLIES	15	500	7,500	0	0	900	13,500	21,000
OWNER FIELD OFFICE	15	250	3,750	0	0	450	6,750	10,500
FIELD OFFICE (S)	1					62,000		
STORAGE TRAILER (4)	12	600	7,200	0	0	0	0	7,200
TOOLS/EQUIPMENT	12	1,500	18,000	0	0	0	0	18,000
INSTRUMENT (LS)	1	0	0	0	0	2,750	2,750	2,750
WATER	15	3,700	55,500	0	0	0	0	55,500
POWER	15	6,500	97,500	0	0	0	0	97,500
PHONE/ FAX	15	1,250	18,750	0	0	0	0	18,750
CELLPHONES/ PAGERS	15	1,400	21,000	0	0	0	0	21,000
TEMP TOILETS	15	1,940	29,100	0	0	0	0	29,100
ICE/CUPS/BOTTLED WATER	15	160	2,400	0	0	0	0	2,400
WATCHMAN (LS)	1	28,000	28,000	0	0	0	0	28,000
SNORKEL LIFT	4	0	0	0	0	1,500	6,000	6,000
TRACTOR	7	0	0	0	0	1,500	10,500	10,500
LIFT TRUCK (FORKLIFT/LULL)	9	0	0	0	0	3,000	27,000	27,000
CRANE RENTAL (BY TRADES)	0	0	0	0	0	0	0	0
SAFETY REQUIREMENTS	15	2,500	37,500	0	0	0	0	37,500
SAFETY RAIL (LS)	1	10,000	10,000	0	0	0	0	10,000
DUMPSTER (JOB COST)	0	0	0	0	0	0	0	0
GENERAL HOUSEKEEPING (Avg 6)	13	0	0	20,784	270,192	0	0	270,192
FINAL INTERIOR CLEAN (JOB COST)	0	0	0	0	0	0	0	0
FINAL EXTERIOR CLEAN (JOB COST)	0	0	0	0	0	0	0	0
SPECIAL TEMP POWER (LS)	1	5,000	5,000	0	0	5,000	5,000	10,000
SPECIAL TEMP WATER (LS)	1	3,500	3,500	0	0	2,500	2,500	6,000
MISC RENTAL (PUMPS/LIGHTS)	15	1,200	18,000	0	0	500	7,500	25,500
TEMP FENCE/CHAIN LINK(JOB COST)	0	2.80	0	0	0	0	0	0
TEMP ROADS/ ACCESS (LS)	1	12,000	12,000	0	0	0	0	12,000
TEMP BARRICADES/ PROTECT'N (LS)	1	6,000	6,000	0	0	0	0	6,000
PLAN COST (LS)	1	50,000	50,000	0	0	0	0	50,000
PROJECT SIGNS (LS)	1	4,500	4,500	0	0	0	0	4,500
POSTAGE INCL EXPRESS MAIL	15	250	3,750	0	0	0	0	3,750
ASBUILTS (LS)	1	6,000	6,000	0	0	0	0	6,000
WATERPROOFING CONSULTANT (ALLC	1	0	0	0	0	0	0	0
PHOTOS	15	300	4,500	0	0	0	0	4,500
FIELD EXPENSE/ MISC (SUPPLIES)	15	1,500	22,500	0	0	0	0	22,500
TEMP DOORS/HARDWARE (LS)	1	9,000	9,000	0	0	0	0	9,000
SUBTOTALS/ FACILITIES			\$480,950		\$270,192		\$81,500	\$832,642
SALES TAX @ 6.5%			31,262		0		5,298	36,559
TOTAL/ FACILITIES			\$512,212		\$270,192		\$86,798	\$869,201

QUALIFICATIONS AND CLARIFICATIONS

Division 1: General Requirements

- 1) All permits, impact fees, tapping fees, connection fees, meters, occupancy, utility fees, usage fees, easements, rights-of-way, and other governmental fees are paid for and obtained by the Owner.
- 2) The GMP does not include Builder's Risk Insurance. The Owner is responsible for Builder's Risk insurance W.G. Mills, Inc. shall comply with Article 9 of the Special Conditions of the Contract for Construction management at Risk Services.
- 3) The GMP assumes that General Liability Insurance will be provided by the Owner.
- 4) The GMP includes coordination with the Owner's consultants and the Owner's separate contractors but it does not include supervising the work of the Owner's consultants. W.G. Mills, Inc. shall comply with Article 2 of the Contract for Construction Management at Risk Service.
- 6) This GMP proposal for the project is based on the plans and specifications provided by Zyscovich Inc. (See attached Document List), as further clarified herein.
- 7) Products with discontinued model and/or part #'s shall be revised to current comparable model/part #'s, upon review and approval by owner.
- 8) Florida State sales tax on materials and goods is included, in accordance with State Statutes, however, W.G. Mills, Inc. shall comply with the School District's Direct Material Purchase Program.
- 9) In order to meet the scheduling deadlines required for the project, W. G. Mills and its subcontractors will recommend ordering all long lead equipment items immediately after the notice to proceed is issued.
- 10) We have included the cost for a Performance and Payment Bonds for W. G. Mills, Inc.
- 11) We have included the cost for subcontractor bonds by way of the Sub Guard program.
- 12) The GMP does not include the cost of any special inspections required by the designers, Architect/Engineer, Owner, or Government Agencies having jurisdiction over the work.
- 13) Building envelope material testing is included in our GMP as a proactive approach to water intrusion. Owner to provide independent testing services to perform specified inspections and testing. Special Testing such as Environmental Testing are not included. Threshold inspection services are not included. All retesting as a result of non-compliance with the contract documents shall be paid by the Contractor. (A reimbursable allowance may be carried in the estimate if so desired by the owner).
- 14) Provisions for environmental contaminates, protected wildlife or archaeological finds are not included.
- 15) GMP Value has been adjusted to include accepted V.E. options.

Division 2: Sitework

- 16) We did not include any demolition or removal of existing structures.
- 17) The GMP assumes the existing soil is of suitable quality with no de-mucking required.
- 18) Silt fencing is included.
- 19) One monumental sign is included at the entrance to the school property.
- 20) Landscape has been included as an allowance. The value has been adjusted down to reflect revised vegetation quantities provided by Zyscovich, Inc. on 5/8/2007. Revised landscape plan has not been provided at this time.

Division 3: Concrete

Division 4: Masonry

- 21) We include masonry walls where indicated on the drawings.
- 22) All interior block walls to start at the first floor slab level.
- 23) Pre assembled expansion joints are included.

Division 5: Metal

- 24) Metal pan stairs and aluminum hand rails.

Division 6: Wood and Plastics

- 25) Casework, lockable cabinets, Formica counters and pressure treated wood nailers.

Division 7: Thermal and Moisture Protection

Division 8: Doors and Windows

- 26) Impact glass is included for all exterior windows, storefront.

Division 9: Finishes

- 27) We include Texcote (similar) over Tilt Up walls.
- 28) Painting of concealed ductwork, piping, etc. in ceilings is not included.

Division 10 Specialties

- 29) Marker Boards and tack boards are included where indicted on documents.
- 30) Operable partitions are not shown, nor included.
- 31) Wall protection systems are not shown on the plans, so have been included as an allowance.

Division 11: Equipment

- 32) No Smart Boards / Active Boards are included.
- 33) Theatrical Equipment is included in the Electrical scope.
- 34) Residential Equipment is included where indicated on the drawings.

Division 12: Furnishings

- 35) Surface mounted entrance mats are not shown on the plans, so have been included as an allowance.
- 36) Owner FF& E items are not included.
- 37) We include vertical blinds at all exterior windows, and for interior windows.

Division 13: Special Construction

- 38) We include a Pre Engineered Metal building for the covered PE Shelter as indicated on the drawings.

Division 14: Conveying System

- 39) Hydraulic elevator is included where indicated on the drawings.

Division 15: Mechanical

- 40) We include a complete fire sprinkler system. Walkways, PE storage, and PE shelter are not included as sprinkled.
- 41) System to be a wet automatic fire sprinkler system designed and installed by qualified contractor in accordance with the specifications.

- 42) Testing and balancing services are by others.
- 43) HVAC controls are by others.
- 44) Pre-wiring for controls is included.

Division 16: Electrical

- 45) Data/telephone system raceways are included.
- 46) Video surveillance system raceways are included.
- 47) Security System raceways are included.
- 48) Empty conduit and boxes for card access system is included.
- 49) Lightning protection is included.
- 50) Fire Alarm is included.
- 51) Site Lighting is included.
- 52) Emergency Generator is included.

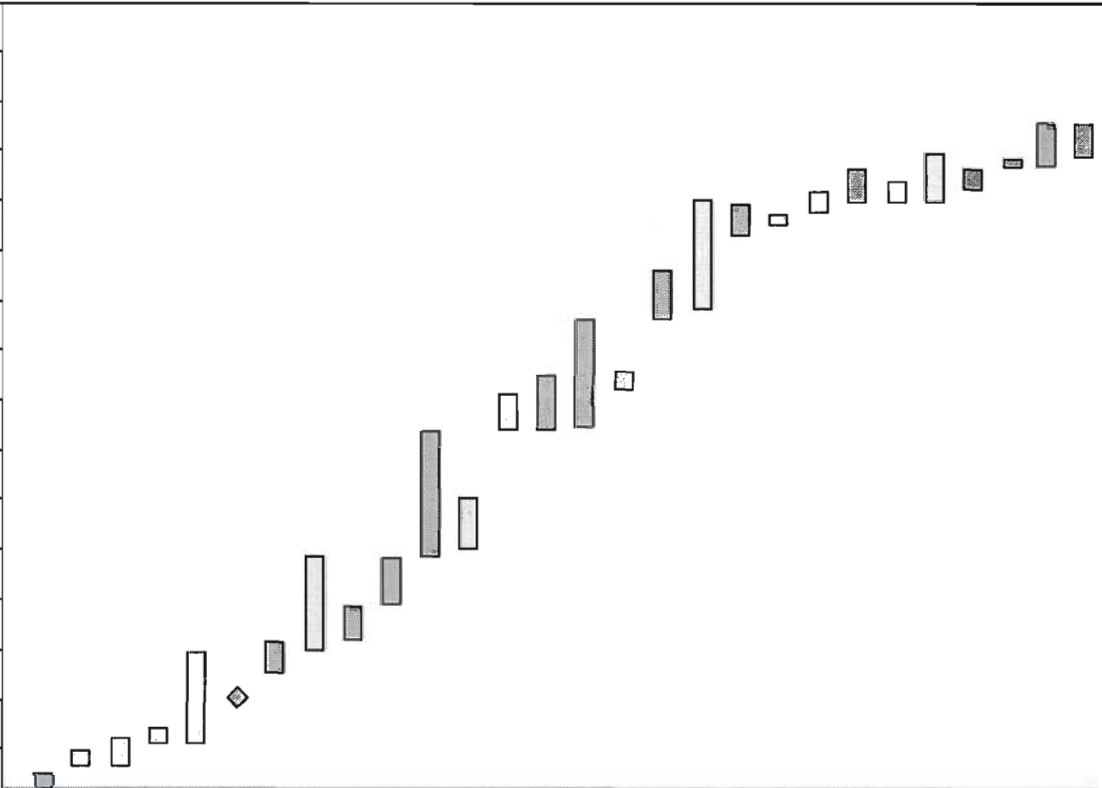
Project Title: **West Boynton Area Elementary School**
 SDPBC Project #0281-8243
 Project #: 20646

May 18th,2007

No.	Alternates/Value Engineering	Amount	Accepted	Declined
1	Exclusion of 2" 50/50 Soil Blanket Throughout Site, St. Augustine Only	(\$65,508)	(\$65,508)	
2	Use Typar Weed Barrier Vs. Dewit Weed Barrier	(\$8,960)	(\$8,960)	
3	Delete Railing at Fence Bottom and Replace with Tension Wire	(\$25,000)	(\$25,000)	
4	Change Cabinet Locks to Standard National Cabinet Locks	(\$75,140)		(\$75,140)
5	Doors and frames to be manufactured by Steel Craft	(\$80,405)	(\$80,405)	
6	Delete insect screens at operable windows	(\$22,630)	(\$22,630)	
7	Delete marble window sills. Details show marble sills at exterior windows	(\$10,800)		(\$10,800)
8				
9				
10				
11				
12				
13				
14				
15				
16				
17				
18				
19				
20				
21				
22				
23				
24				
25				
26				
27				
28				
29				
30				
31				
32				
33				
34				
35				
36				
37				
38				
Total		(\$288,443)	(\$202,503)	(\$85,940)

Note: The Guaranteed Maximum Price (GMP) has been updated to reflect the items noted as accepted above.

2007												2008											
M	J	J	A	S	O	N	D	J	F	M	A	M	J	J	A	M	A	M	J	J	A		

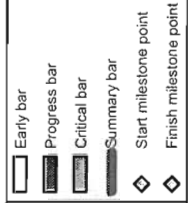


Act ID	Description	Orig Dur	Early Start	Early Finish
1000	Clearing & Grubbing	10	07MAY07	18MAY07
1010	Mobilization	10	21MAY07	01JUN07
1340	Retention Area Construction	15	21MAY07	08JUN07
1020	Building Pad Preparation	10	04JUN07	15JUN07
1360	Storm Structure Fabrication	40	04JUN07	30JUL07
1060	Notice To Proceed For Vertical Construction	0	02JUL07	
1310	Vibrocompaction	15	17JUL07	06AUG07
1350	Underground Site Utilities	44	31JUL07	28SEP07
1030	Underground MEP	15	07AUG07	27AUG07
1040	Foundations & S.O.G.	22	28AUG07	26SEP07
1050	Building Structure	55	27SEP07	12DEC07
1210	Parking/Bus Loop Construction	25	01OCT07	02NOV07
1070	Roofing	15	13DEC07	04JAN08
1080	Drywall Framing	22	13DEC07	15JAN08
1090	MEP Rough-ins	45	14DEC07	18FEB08
1100	Aluminum Windows & Exterior Doors	10	07JAN08	18JAN08
1120	Insulation & Drywall	22	19FEB08	19MAR08
1110	HVAC Ductwork & Equipment	50	25FEB08	02MAY08
1130	Painting	15	09APR08	29APR08
1140	Acoustical Ceiling Grid	5	16APR08	22APR08
1150	Casework	10	23APR08	06MAY08
1170	VCT & Ceramic Tile	15	30APR08	20MAY08
1200	Covered Walkways	10	30APR08	13MAY08
1280	Asphalt Paving & Marking	22	30APR08	29MAY08
1160	Wood Doors & Hardware	10	07MAY08	20MAY08
1180	Acoustical Ceiling Tile	5	21MAY08	27MAY08
1190	Sod/Landscaping/Irrigation	20	21MAY08	17JUN08
1215	Test & Balance HVAC	15	28MAY08	17JUN08

W. G. Mills, Inc.
West Boynton Area Elementary School 03-Z
VERTICAL CONSTRUCTION SCHEDULE

Start date	07MAY07
Finish date	11AUG08
Data date	07MAY07
Run date	02MAY07
Page number	1A

© Primavera Systems, Inc.



Act ID	Description	Orig Dur	Early Start	Early Finish
1270	TCO/SC Inspections	10	04JUN08	17JUN08
1220	Substantial Compl. (Tentative Date/Pending NTP)	0		17JUN08
1320		1	07MAY07	07MAY07
1330		1	07MAY07	07MAY07
1230	Owner Training	5	18JUN08	24JUN08
1240	Punch List Work	22	18JUN08	18JUL08
1300	Final Cleaning & Waxing of Floors	5	15JUL08	21JUL08
1290	Final Completion	0		18JUL08
1250	Close-out Documentation	15	21JUL08	08AUG08
1260	Owner FF&E & Move-in	15	22JUL08	11AUG08

2007												2008																			
M	J	J	A	S	O	N	D	J	F	M	A	M	J	J	A	M	J	J	A	S	O	N	D	J	F	M	A	M	J	J	A

Start date 07MAY07
 Finish date 11AUG08
 Data date 07MAY07
 Run date 02MAY07
 Page number 2A

© Primavera Systems, Inc.

W. G. Mills, Inc.
West Boynton Area Elementary School 03-Z
VERTICAL CONSTRUCTION SCHEDULE

Legend:
 □ Early bar
 ▨ Progress bar
 ▩ Critical bar
 ▭ Summary bar
 ◇ Start milestone point
 ◇ Finish milestone point

Project Title: **West Boynton Area Elementary School**
 SDPBC Project #0281-8243
 Project #: 20646

May 2nd, 2007

No.	Extraordinary Costs	Amount	Reason
1	Water Service - Approximately 915 additional feet	\$31,110	Future Middle School
2	Storm System	\$94,946	Future Middle School
3	Landscape Buffer	\$29,694	County Requirement
4	Fencing at South Portion of Site	\$34,050	Future Middle School
5	Vibrocompaction of Soil (Allowance)	\$435,000	Soil Load Bearing Capacity
6	Berms at South Portion of Site	\$10,280	Future Middle School
7	Site Lighting for South Parking	\$18,000	Future Middle School
8	South Parking	\$89,143	Future Middle School
9	Canal Crossing - 72" RCP and Concrete Head Walls	\$75,910	Site Condition
10	Turn Lanes on Boynton Beach BLVD (Allowance)	\$153,054	DOT Requested
11			
12			
13			
14			
15			
16			
17			
18			
19			
20			
21			
22			
23			
24			
25			
26			
27			
28			
29			
30			
31			
32			
33			
34			
35			
36			
37			
38			
39			
Total		\$971,187	

**EXHIBIT B
GUARANTEED MAXIMUM PRICE SUMMARY**

**PROJECT NAME: WEST BOYNTON AREA ELEMENTARY SCHOOL 03-Z
PROJECT NO.: 0281-8243**

DIVISION 1 – GENERAL REQUIREMENTS (Direct Cost Items Related to Site).....	\$ 250,275.00
DIVISION 2 – SITE CONSTRUCTION.....	\$ 3,520,134.00
DIVISION 3 – CONCRETE.....	\$ 4,158,485.00
DIVISION 4 – MASONRY.....	\$ 201,091.00
DIVISION 5 – STEEL.....	\$ 359,679.00
DIVISION 6 – CARPENTRY.....	\$ 0.00
DIVISION 7 – THERMAL/MOISTURE.....	\$ 660,693.00
DIVISION 8 – WINDOWS AND DOORS.....	\$ 804,390.00
DIVISION 9 – FINISHES.....	\$ 2,052,694.00
DIVISION 10 – SPECIALTIES.....	\$ 518,428.00
DIVISION 11 – EQUIPMENT.....	\$ 403,060.00
DIVISION 12 – FURNISHINGS.....	\$ 516,300.00
DIVISION 13 – SPECIAL CONSTRUCTION.....	\$ 93,222.00
DIVISION 14 – ELEVATOR.....	\$ 51,329.00
DIVISION 15 – MECHANICAL.....	\$ 3,523,171.00
DIVISION 16 – ELECTRICAL.....	\$ 3,085,000.00
 TOTAL (divisions 1-16 including accepted value engineered items)	 \$ 20,197,951.00
 BONDS AND INSURANCE.....	 \$ 500,789.00
CONSTRUCTION PHASE FEE (On Site Staff).....	\$ 1,410,839.00
GENERAL CONDITIONS (Direct Cost Items Related to Field Staff).....	\$ 869,201.00
CONSTRUCTION MANAGER FEE (Overhead & Profit).....	\$ 1,171,374.00
CONSTRUCTION CONTINGENCY.....	\$ 448,710.00
 DEDUCT: SALES TAX RECOVERY (Guaranteed).....	 (\$ 280,444.00)
 TOTAL GUARANTEED MAXIMUM PRICE.....	 \$ 24,318,420.00
*Includes \$1,173,957.00 for Phase 1 Site GMP previously approved.	
 PRECONSTRUCTION PHASE FEE.....	 \$ 199,210.00
 TOTAL CONSTRUCTION COST (Preconstruction Fee + GMP).....	 \$ 24,517,630.00

Certified True and Correct by:

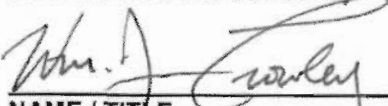
	5/29/07
NAME / TITLE	DATE
Wm. Dean Crowley, Senior Vice President of Construction	

EXHIBIT D**PERSONNEL ASSIGNED DURING CONSTRUCTION
SUMMARY OF CONSTRUCTION PHASE FEES****PROJECT NAME: WEST BOYNTON AREA ELEMENTARY SCHOOL 03-Z
PROJECT NO.: 0281-8243**ON-SITE

<u>Name/Title</u>	<u>Duration</u>	<u>% of Time</u>	<u>Rate / Week</u>	<u>Total</u>
Tim Hensey Project Executive	65 wks	10%	\$6,000.00	\$39,000.00
Dean Crowley / Lyndell Mims Co-Project Directors	65 wks	30%	\$ 4,143.00	\$80,788.00
Greg Thompson Safety Director	65 wks	10%	\$3,000.00	\$19,500.00
Jason Wilson Project Mgr	65 wks	100%	\$3,500.00	\$227,500.00
David Cutlip Asst. Project Mgr.	65 wks	100%	\$2,190.00	\$142,350.00
Andre Collins Project Eng. / QAP	60 wks	100%	\$3,000.00	\$180,000.00
Superintendent	65 wks	100%	\$3,500.00	\$227,500.00
Asst. Superintendent	60 wks	100%	\$2,255.00	\$135,300.00
Field Assistant	60 wks	100%	\$2,180.00	\$130,800.00
Site Secretary	65 wks	100%	\$1,350.00	\$87,750.00
Salary Adjustments	48 wks	7% increase		\$67,226.00
Vehicle Gas & Oil	65 wks		\$1,125.00	\$73,125.00

TOTAL \$1,410,839.00

**EXHIBIT E
CONSTRUCTION MANAGER'S STAFF PER DIEM FOR TIME EXTENSIONS**

**PROJECT NAME: WEST BOYNTON AREA ELEMENTARY SCHOOL 03-Z
PROJECT NO.: 0281-8243**

<u>Name/Title</u>	<u>Hrs/Day</u>	<u>Rate / Hour</u>	<u>Per Diem Rate</u>
Tim Hensey Project Executive	0.8	\$150.00	\$ 120.00
Dean Crowley / Lyndell Mims Co-Project Director	2.4	\$103.75	\$249.00
Greg Thompson Safety Director	0.8	\$75.00	\$60.00
Jason Wilson Project Mgr	8	\$87.50	\$700.00
David Cutlip Asst. Project Mgr	8	\$54.75	\$438.00
Andre Collins Project Eng. / QAP	8	\$75.00	\$600.00
Superintendent	8	\$87.50	\$700.00
Asst. Superintendent	8	\$56.375	\$451.00
Field Assistant	8	\$54.50	\$436.00
Site Secretary	8	\$33.75	\$270.00
Salary Adjustments (8/15/07 – 9/1/07)	7%		\$282.00
Vehicle Gas & Oil			225.00

TOTAL STAFF PER DIEM \$4,531.00

EXHIBIT S
SUBCONTRACTORS PARTICIPATION
DIVISIONS 1-16

PROJECT NAME: WEST BOYNTON AREA ELEMENTARY SCHOOL 03-Z

PROJECT NO: 0281-8243

APPROVED GMP AMOUNT: \$ 24,318,420.00 *Includes \$1,172,957.00 for Phase 1 - Site GMP Previously Approved

Subject to Agreement with the Construction Manager, the Subcontractor firms listed below will participate in this project for the Contract (Trade) items and the dollar amounts shown.

ITEM #	DESCRIPTION	COST (ACTUAL)	BUDGET (EST COST)	SUBCONTRACTOR NAME	M/WBE (YES OR NO)	\$ AMOUNT	%
Div. 1-1	Cleaning		\$ 63,975.00	Custom Building Cleaning	No		0.0%
Div. 1-2	Temporary Fencing		\$ 25,200.00	Tropic Fence Company	Yes	\$25,200.00	0.1%
Div. 2-1	Site Grading		\$ 570,799.00	Hughes Construction Industries Inc.	No		0.0%
Div. 2-2	Asphalt Paving		\$ 1,700,374.00	Hughes Construction Industries Inc.	No		0.0%
Div. 2-3	Landscaping		\$ 360,000.00	Becker Landscaping & Irrigation	No		0.0%
Div. 2-4	Fencing		\$ 180,907.00	Commercial Fence Contractors	No		0.0%
Div. 3-1	PSI Floor System		\$ 1,168,800.00	Prestress Concrete, Inc.	No		0.0%
Div. 3-2	Concrete		\$ 2,989,685.00	LMCC Specialty Contractors	Yes	\$2,989,685.00	12.3%
Div. 4-1	Masonry		\$ 201,091.00	Ferguson Masonry, Inc.	No		0.0%
Div. 5-1	Miscellaneous Steel		\$ 256,979.00	To be determined	No		0.0%
Div. 5-2	Steel Trusses		\$ 102,700.00	To be determined	No		0.0%
Div. 7-1	Roofing		\$ 660,693.00	Latite Roofing	No		0.0%
Div. 8-1	Doors and Frames		\$ 458,415.00	Hollow Metal Specialists, Inc.	No		0.0%
Div. 8-2	Glass and Glazing		\$ 345,975.00	Superior Window	No		0.0%
Div. 9-1	Drywall / Gypsum Board		\$ 1,156,500.00	D&D Quality	Yes	\$1,156,500.00	4.8%
Div. 9-2	Ceramic Tile		\$ 207,676.00	Zaharions Flooring	Yes	\$207,676.00	0.9%
Div. 9-3	Acoustical Ceilings		\$ 196,162.00	Martin Acoustics	No		0.0%

EXHIBIT S
SUBCONTRACTORS PARTICIPATION
DIVISIONS 1-16

Div. 9-4	VCT	\$ 211,975.00	Zaharions Flooring	Yes	\$211,975.00	0.9%
Div. 9-5	Painting	\$ 280,381.00	TWG Enterprises	No		0.0%
Div. 10-1	Specialties	\$ 361,609.00	To be determined	No		0.0%
Div. 10-2	Covered Walkways	\$ 151,819.00	American Walkway Covers	No		0.0%
Div. 11-1	Kitchen Equipment	\$ 403,060.00	Design Furnishings & Equipment	No		0.0%
Div. 12-1	Casework	\$ 516,300.00	Commercial Casework	No		0.0%
Div. 13-1	Metal Building / PE Shelter	\$ 93,222.00	To be determined	No		0.0%
Div. 14-1	Hydraulic Elevator	\$ 51,329.00	ThyssenKrupp Elevator	No		0.0%
Div. 15-1	Fire Protection	\$ 441,685.00	Farmer & Irwin	No		0.0%
Div. 15-2	Plumbing	\$ 782,653.00	Wilbur Plumbing	No		0.0%
Div. 15-3	HVAC	\$ 2,298,833.00	Southeast Mechanical	No		0.0%
Div. 16-1	Electrical	\$ 3,085,000.00	Fastrac Electric	No		0.0%

Subcontractors represented as MWBE Certified are according to requirements established in the Proposal Documents. Attach a copy of the Certification for each Subcontractor listed.

Contractor's Firm Name: W. G. Mills, Inc.

Name and Position (type or print): Wm. Dean Crowley, Senior Vice President of Construction

SIGNATURE: 

DATE: 5.29.07

Total MWBE Subcontractor Participation \$ 4,591,036.00

Percentage of Total Bid (Base & Alternates) 18.9%